

Haitian Saturn Serisi



# Haitian Saturn Serisi

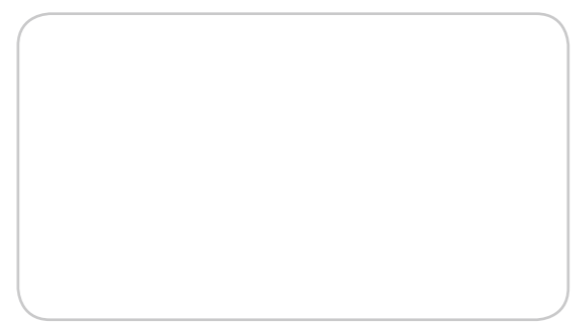
## Specifications International



**HAITIAN INTERNATIONAL HOLDINGS LIMITED**  
Unit 1105 Level 11  
Metroplaza Tower 2  
223 Hing Fong RD Kwai Fong N.T  
haitian@mail.haitian.com  
www.haitian.com

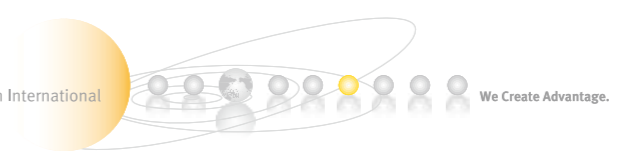
**NINGBO HAITIAN HUAYUAN MACHINERY CO., LTD.**  
Export Processing Zone, Ningbo 315800 China  
+86-574-86 177 242  
+86-574-86 221 864  
haitian@mail.haitian.com  
www.haitian.com

Haitian Partner:



HT 080325-IV

A Member of Haitian International

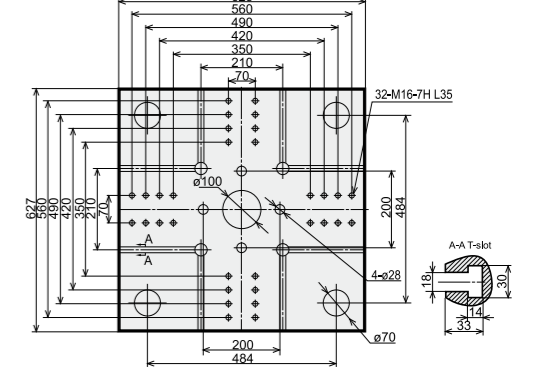
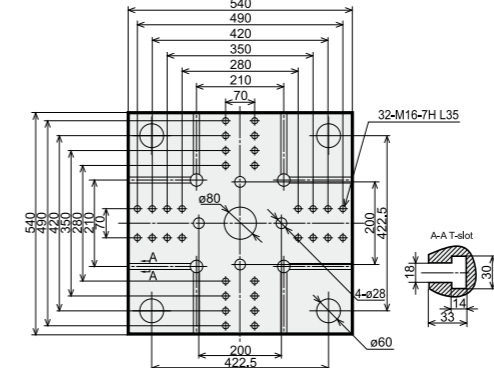
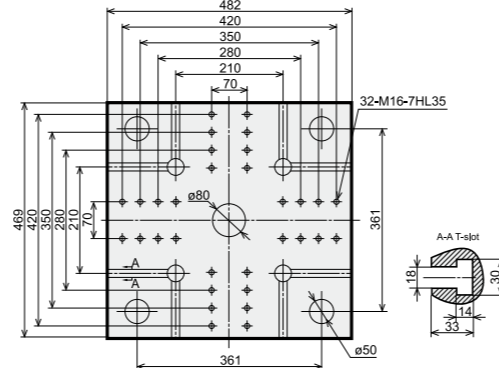
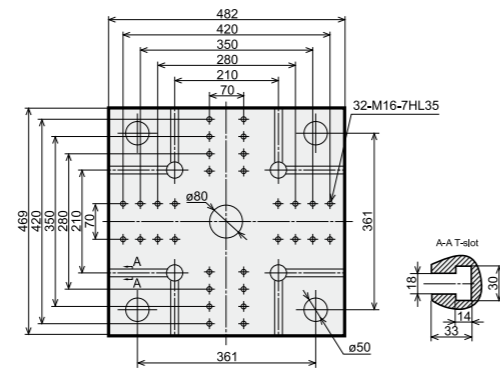


## Spesifikasyon

		SA 600/100		SA 600/150			SA900/300			SA1200/410		
		A	B	A	B	C	A	B	C	A	B	C
<b>ENJEKSİYON ÜNİTESİ</b>												
Vida Çapı	mm	22	26	26	30	34	32	36	40	36	40	45
Vide Boy/Çap oranı	L/D	24	20.3	24.2	21	19.5	22.5	20	18	23.3	21	18.7
Teorik enjeksiyon hacmi	cm <sup>3</sup>	38	53	66	88	113	121	153	188	173	214	270
Enjeksiyon Kapasitesi (PS)	g	35	48	60	80	103	110	139	171	157	195	246
Enjeksiyon Oranı	g/s	52	72	66	88	113	87	110	136	117	144	182
Enjeksiyon Basıncı	MPa	266	191	236	177	138	249	197	160	237	192	152
Plastikleşme Hızı (PS)	g/s	5.1	7	7	9.3	11.4	11	12.6	15.4	12.6	15.4	20
Vida Devir Hızı	rpm	0~290		0~290			0~295			0~285		
<b>MENGENE ÜNİTESİ</b>												
Kilitleme Gücü	kN	600		600			900			1200		
Mengene Stroğu	mm	270		270			320			360		
Kolonlar Arası Mesafe	mm	310 x 310		310 x 310			360 x 360			410 x 410		
Max.Kalıp Kalınlığı	mm	330		330			380			450		
Min.Kalıp Kalınlığı	mm	120		120			150			150		
İtici Stroğu	mm	70		70			100			120		
İtici Gücü	kN	22		22			33			33		
İtici Sayısı	pcs	1		1			5			5		
<b>DİĞERLERİ</b>												
Max.Pompa Basıncı	MPa	16		16			16			16		
Pompa motor Gücü	kW	11		11			15			18.5		
Isıtıcı Gücü	kW	4.55		5.1			6.2			9.75		
Makina Boyutlan	m	3.76 x 1.13 x 1.76		3.76 x 1.13 x 1.76			4.32 x 1.23 x 1.86			4.83 x 1.26 x 1.96		
Makina Ağırlığı	t	2.3		2.5			3.46			4.6		
Mal Hazne Kapasitesi	kg	25		25			25			25		
Yağ Tankı Kapasitesi	l	180		180			240			280		

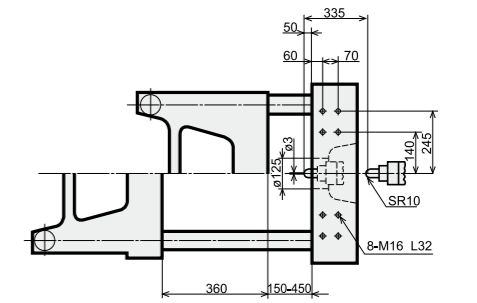
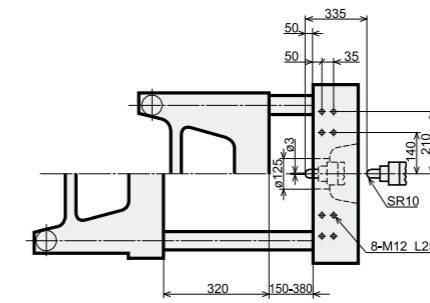
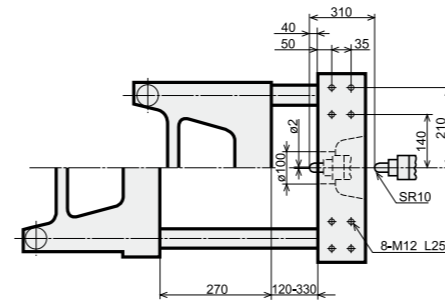
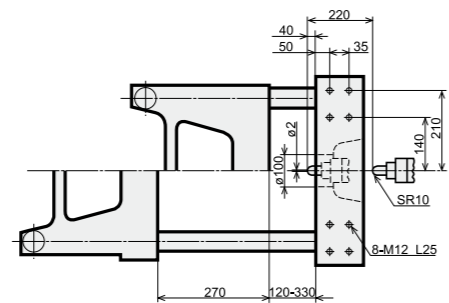
## Plaka Ebatları

Hareketli Plaka



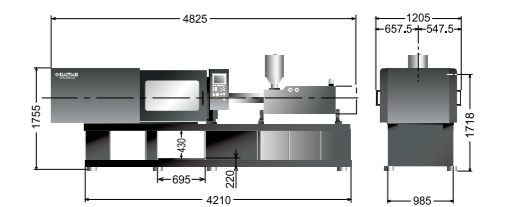
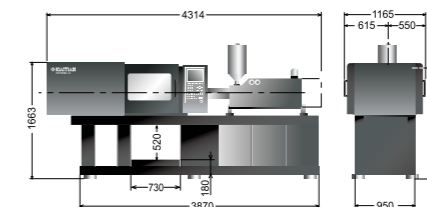
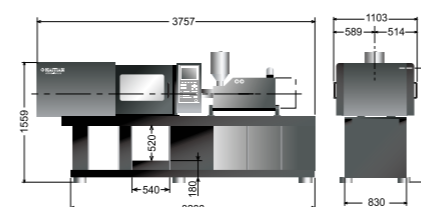
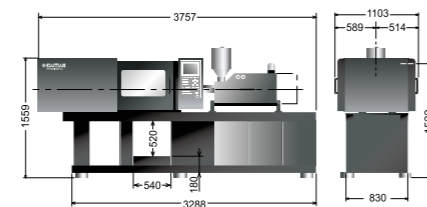
## Plaka Ebatları

Robot bağlantı delikleri sabit plakada



## Makina Boyutları

We reserve the right to make changes as a result of further technical advantages.



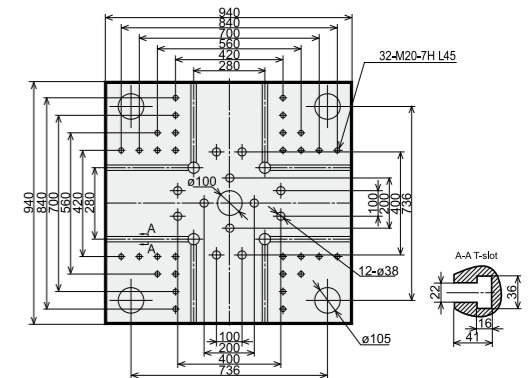
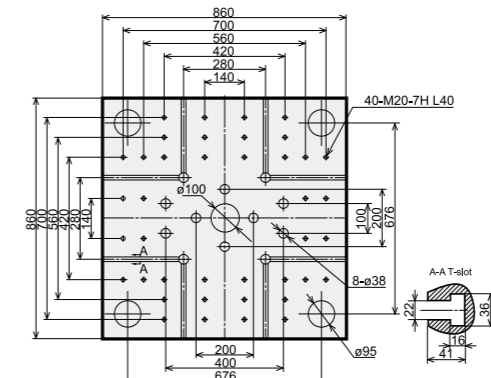
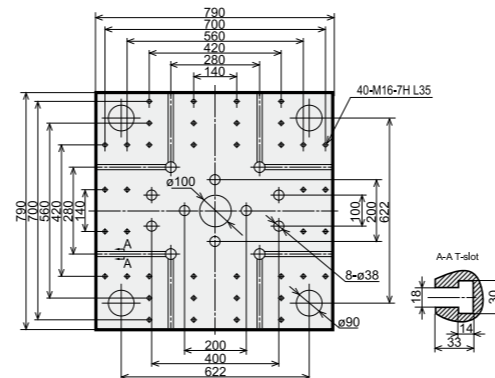
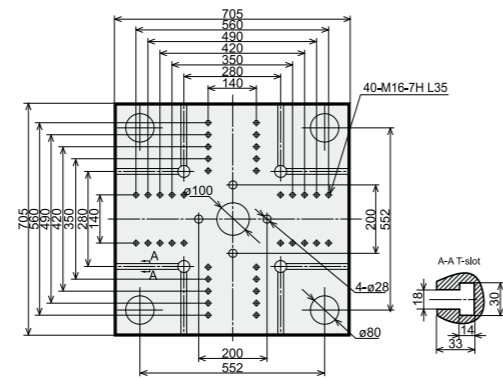
\* Depend on injection size

## Spesifikasyon

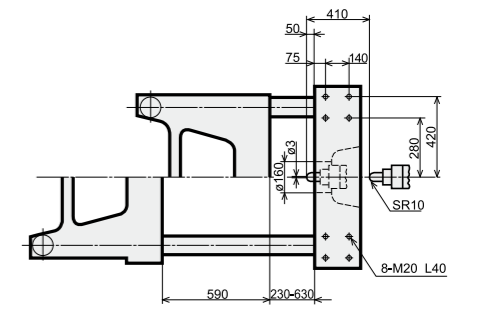
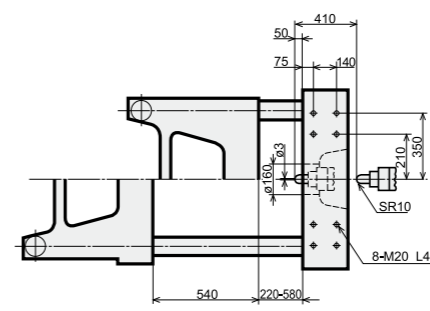
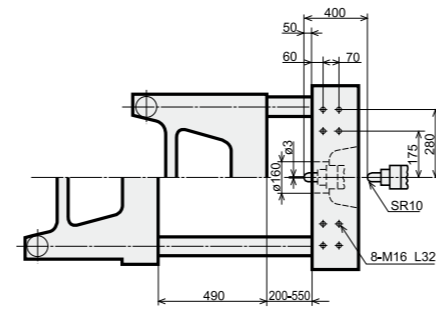
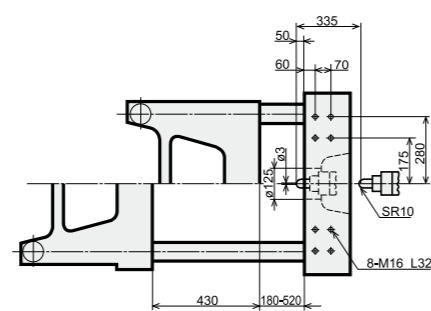
	SA1600/600			SA 2000/770			SA 2500/1000			SA 2800/1350			
	A	B	C	A	B	C	A	B	C	A	B	C	
<b>ENJEKSİYON ÜNİTESİ</b>													
Vida Çapı	mm	40	45	50	45	50	55	50	55	60	55	60	65
Vide Boy/Çap oranı	L/D	22.5	20	18	22.2	20	18.2	22	20	18.3	21.8	20	18.5
Teorik enjeksiyon hacmi	cm <sup>3</sup>	253	320	395	334	412	499	471	570	679	618	735	863
Enjeksiyon Kapasitesi (PS)	g	230	291	359	304	375	454	429	519	618	562	669	785
Enjeksiyon Oranı	g/s	135	171	211	191	235	285	205	248	295	270	321	377
Enjeksiyon Basıncı	MPa	238	188	152	231	187	155	215	178	149	219	184	157
Plastikleşme Hızı (PS)	g/s	15.4	20	24	20	24	29.6	24	29.6	33.7	29.6	33.7	38.2
Vida Devir Hızı	rpm		0~265			0~255			0~225			0~270	
<b>MENGENE ÜNİTESİ</b>													
Kilitleme Gücü	kN		1600			2000			2500			2800	
Mengene Stroğu	mm		430			490			540			590	
Kolonlar Arası Mesafe	mm		470 x 470			530 x 530			580 x 580			630 x 630	
Max.Kalıp Kalınlığı	mm		520			550			580			630	
Min.Kalıp Kalınlığı	mm		180			200			220			230	
İtici Stroğu	mm		140			140			150			150	
İtici Gücü	kN		33			62			62			62	
İtici Sayısı	pcs		5			9			9			13	
<b>DİĞERLERİ</b>													
Max.Pompa Basıncı	MPa		16			16			16			16	
Pompa motor Gücü	kW		22			30			30			37	
Isıtıcı Gücü	kW		9.75			14.25			16.65			18.45	
Makina Boyutlan	m		5.15 x 1.35 x 1.96			5.45 x 1.58 x 2.04			6.09 x 1.67 x 2.09			6.43 x 1.83 x 2.08	
Makina Ağırlığı	t		5.3			6.9			8.3			11	
Mal Hazne Kapasitesi	kg		25			50			50			50	
Yağ Tankı Kapasitesi	l		350			420			555			705	

## Plaka Ebatları

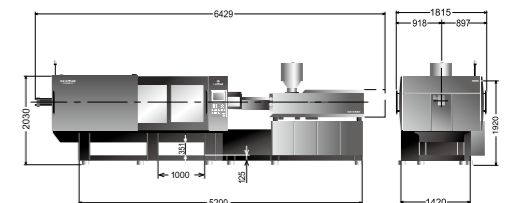
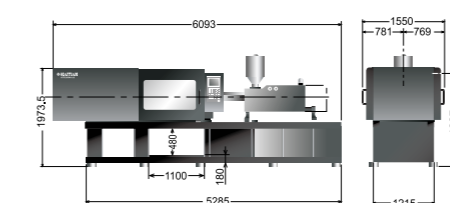
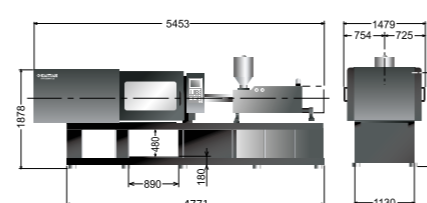
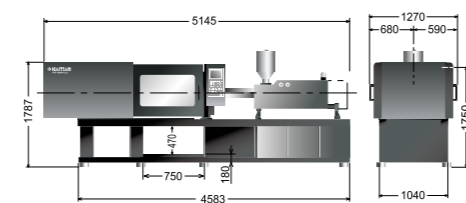
Hareketli Plaka



## Plaka Ebatları

Robot bağlantı delikleri  
sabit plakada

## Makina Boyutları

We reserve the right to make  
changes as a result of further  
technical advantages.

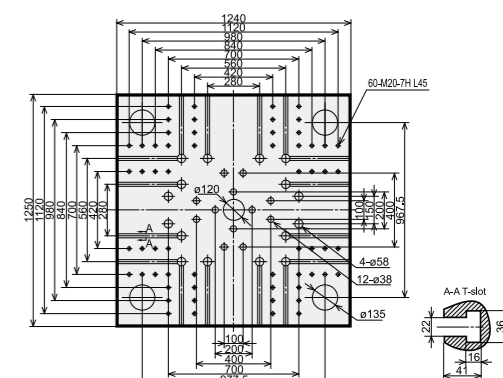
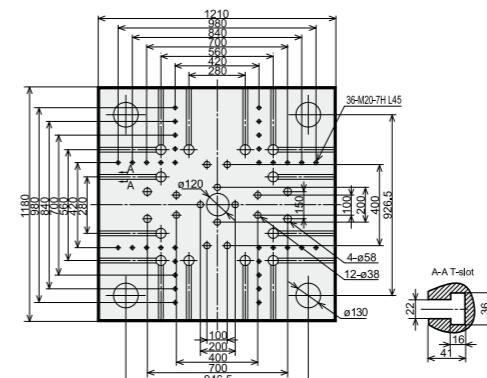
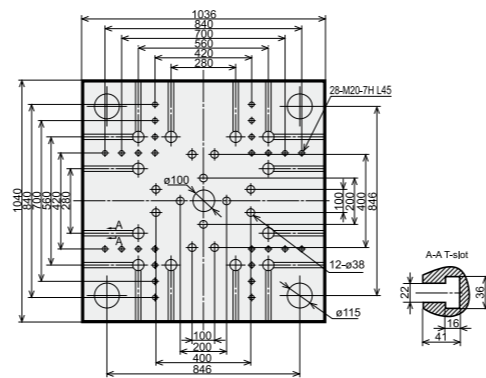
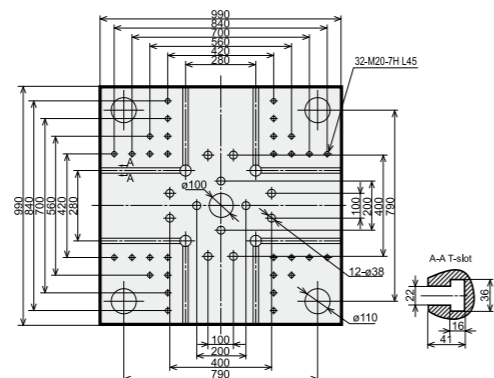
\* Depend on injection size

## Spesifikasyon

	SA 3200/1700			SA 3800/2250				SA 4700/2950				SA 5300/4500				
	A	B	C	A	B	C	D	A	B	C	D	A	B	C	D	
<b>ENJEKSİYON ÜNİTESİ</b>																
Vida Çapı	mm	60	65	70	65	70	75	80	70	80	84	90	80	85	90	100
Vide Boy/Çap oranı	L/D	21.7	20	18.6	21.5	20	18.7	17.5	22.9	20	19.1	17.8	22	20.7	19.6	17.6
Teorik enjeksiyon hacmi	cm <sup>3</sup>	792	929	1078	1068	1239	1423	1619	1424	1860	2050	2354	2212	2497	2799	3456
Enjeksiyon Kapasitesi (PS)	g	721	845	981	972	1127	1295	1473	1296	1693	1866	2142	2013	2272	2547	3145
Enjeksiyon Oranı	g/s	277	325	377	330	383	440	500	390	510	562	645	448	505	567	700
Enjeksiyon Basıncı	MPa	213	182	157	211	182	158	139	207	158	143	125	205	181	162	131
Plastikleşme Hızı (PS)	g/s	33.7	38.2	44.9	38.2	44.9	51.4	58.7	44.9	58.7	64.5	71.8	58.7	65.4	71.8	86.5
Vida Devir Hızı	rpm		0~220			0~220				0~185				0~135		
<b>MENGENE ÜNİTESİ</b>																
Kilitleme Gücü	kN		3200			3800				4700				5300		
Mengene Stroğu	mm		640			700				780				850		
Kolonlar Arası Mesafe	mm		680 x 680			730 x 730				820 x 800				840 x 830		
Max.Kalıp Kalınlığı	mm		680			730				780				850		
Min.Kalıp Kalınlığı	mm		250			280				320				350		
İtici Stroğu	mm		160			180				200				220		
İtici Gücü	kN		62			110				110				158		
İtici Sayısı	pcs		13			13				17				17		
<b>DİĞERLERİ</b>																
Max.Pompa Basıncı	MPa		16			16				16				16		
Pompa motor Gücü	kW		37			45				55				60		
Isıtıcı Gücü	kW		20.85			24.85				30.95				42.35		
Makina Boyutlan	m		6.9 x 1.91 x 2.08			7.36 x 1.96 x 2.15				8.16 x 2.13 x 2.28				9.23 x 2.2 x 2.66		
Makina Ağırlığı	t		13			15				19				26		
Mal Hazne Kapasitesi	kg		50			50				100				200		
Yağ Tankı Kapasitesi	l		730			750				900				1040		

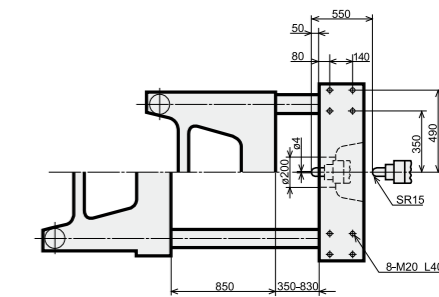
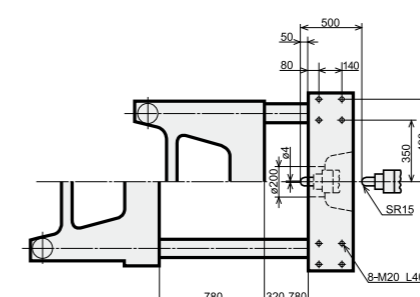
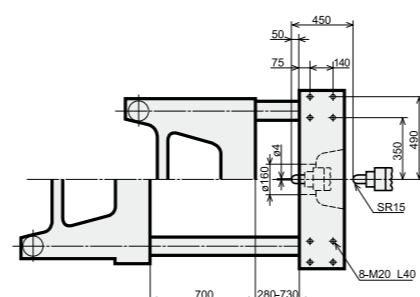
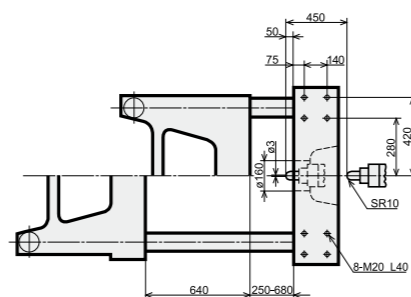
## Plaka Ebatları

Hareketli Plaka



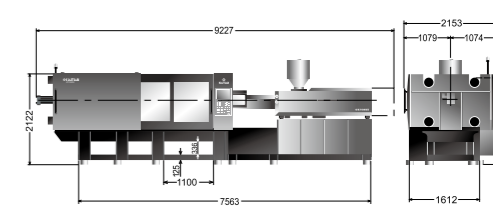
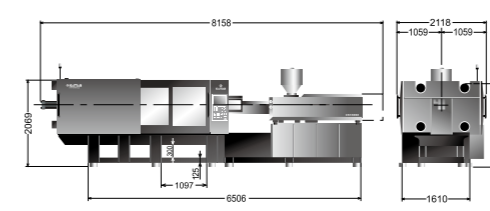
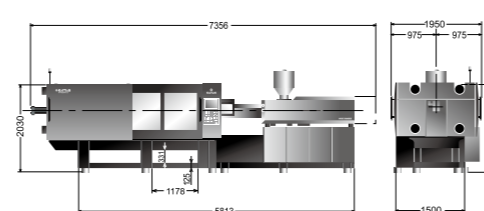
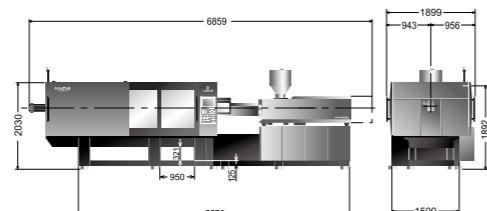
## Plaka Ebatları

Robot bağlantı delikleri sabit plakada



## Makina Boyutları

We reserve the right to make changes as a result of further technical advantages.



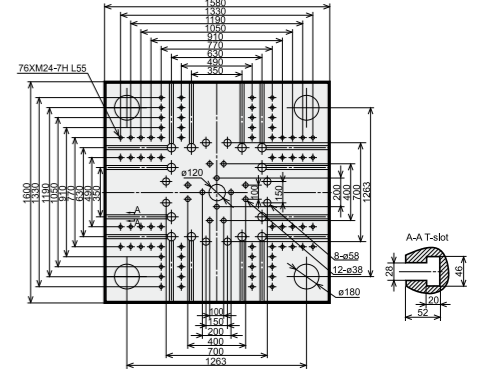
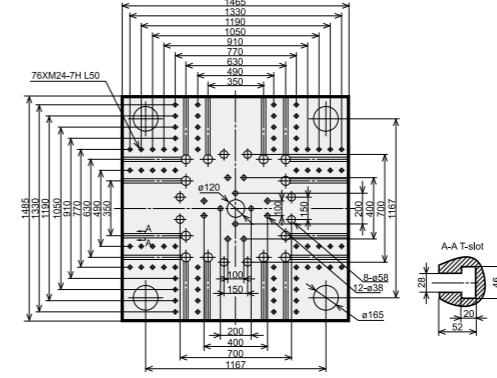
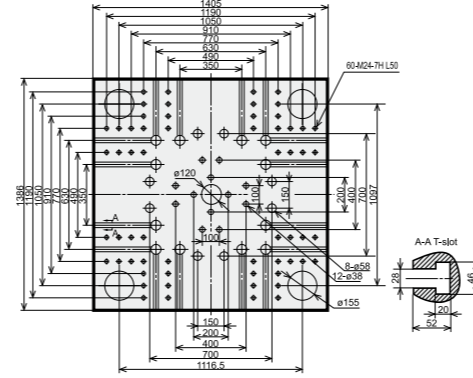
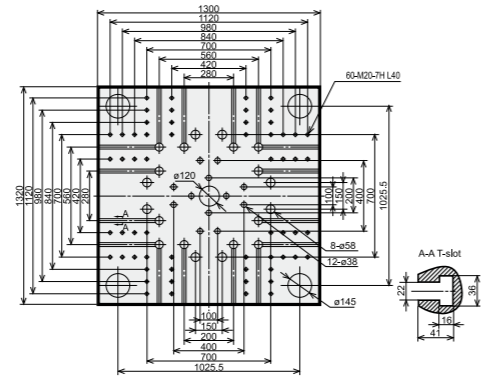
\* Depend on injection size

# Spesifikasyon

		SA 6000/4500				SA 7000/5000				SA 8000/6800				SA 9000/6800			
		A	B	C	D	A	B	C	D	A	B	C	D	A	B	C	D
<b>ENJEKSİYON ÜNİTESİ</b>																	
Vida Çapı	mm	80	85	90	100	80	90	100	110	90	100	110	120	90	100	110	120
Vide Boy/Çap oranı	L/D	22	20.7	19.6	17.6	24.8	22	19.8	18	24.4	22	20	18.3	24.4	22	20	18.3
Teorik enjeksiyon hacmi	cm <sup>3</sup>	2212	2497	2799	3456	2262	2863	3534	4276	2990	3691	4467	5316	2990	3691	4467	5316
Enjeksiyon Kapasitesi (PS)	g	2013	2272	2547	3145	2058	2605	3216	3891	2721	3359	4065	4838	2721	3359	4065	4838
Enjeksiyon Oranı	g/s	448	505	567	700	473	599	739	894	520	642	776	924	520	642	776	924
Enjeksiyon Basıncı	MPa	205	181	162	131	224	177	143	118	228	184	152	128	228	184	152	128
Plastikleşme Hızı (PS)	g/s	58.7	65.4	71.8	86.5	58.7	71.8	86.5	104	71.8	86.5	104	122	71.8	86.5	104	122
Vida Devir Hızı	rpm	0~135				0~140				0~110				0~110			
<b>MENGENE ÜNİTESİ</b>																	
Kilitleme Gücü	kN	6000				7000				8000				9000			
Mengene Stroğu	mm	900				970				1040				1120			
Kolonlar Arası Mesafe	mm	880 x 880				960 x 940				1000 x 1000				1080 x 1080			
Max.Kalıp Kalınlığı	mm	880				940				1000				1080			
Min.Kalıp Kalınlığı	mm	380				400				420				450			
İtici Stroğu	mm	240				260				280				300			
İtici Gücü	kN	158				186				186				186			
İtici Sayısı	pcs	21				21				21				21			
<b>DİĞERLERİ</b>																	
Max.Pompa Basıncı	MPa	16				16				16				16			
Pompa motor Gücü	kW	60				30+37				37+37				37+37			
Isıtıcı Gücü	kW	42.35				51.55				63.75				63.75			
Makina Boyutlan	m	9.5 x 2.23 x 2.66				9.82 x 2.39 x 2.7				10.6 x 2.51 x 2.7				11.1 x 2.62 x 2.7			
Makina Ağırlığı	t	29				32				38				45			
Mal Hazne Kapasitesi	kg	200				200				200				200			
Yağ Tankı Kapasitesi	l	1040				1290				1400				1400			

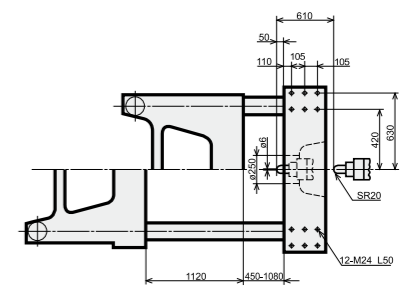
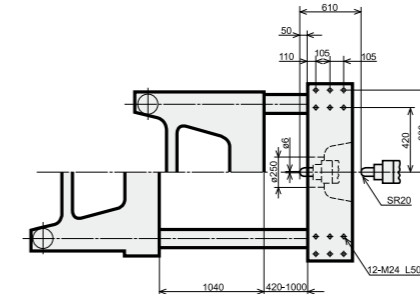
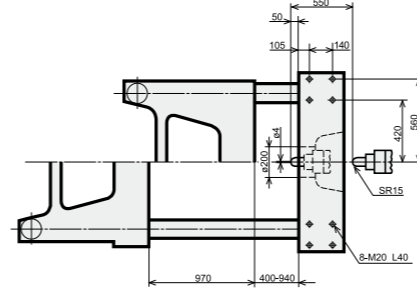
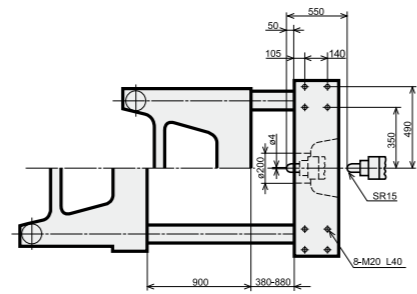
## Plaka Ebatları

Hareketli Plaka



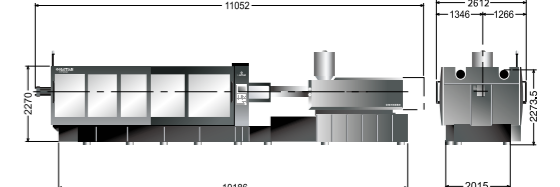
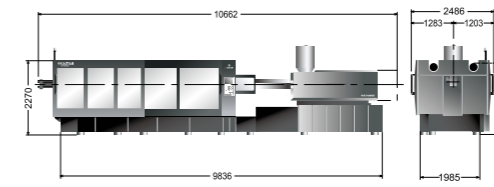
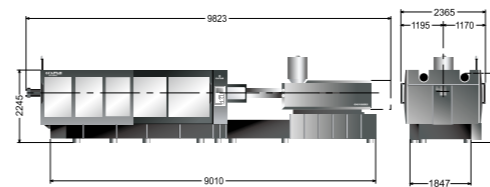
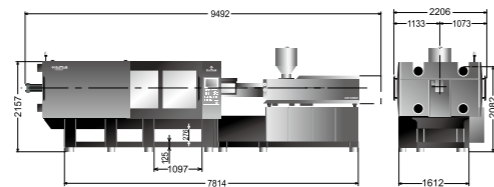
## Plaka Ebatları

Robot bağlantı delikleri sabit plakada



## Makina Boyutları

We reserve the right to make changes as a result of further technical advantages.



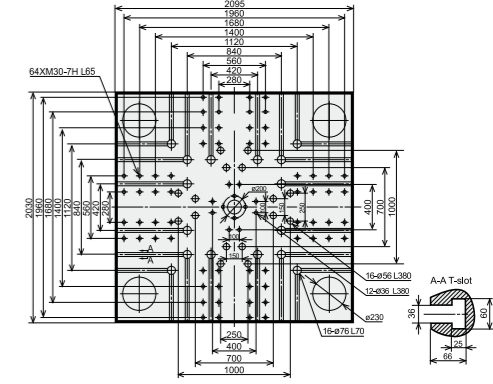
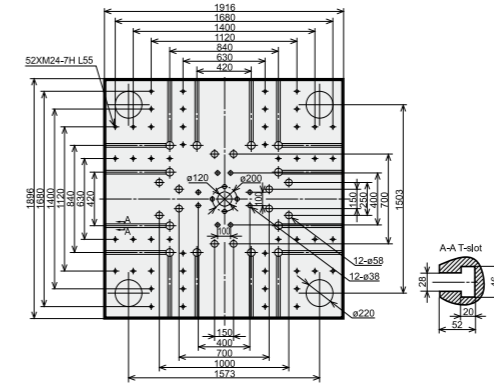
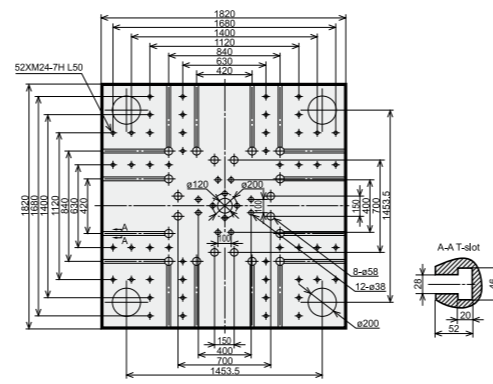
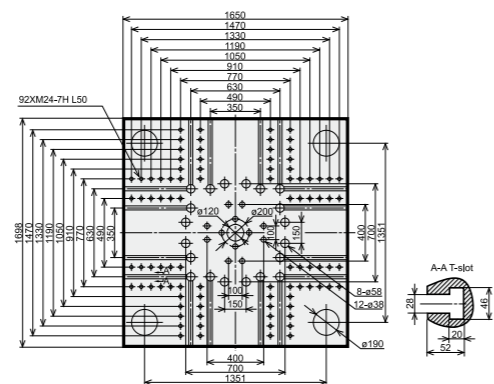
\* Depend on injection size

# Spesifikasyon

		SA 10000/8400				SA 12000/8400				SA 13000/10500				SA 14000/10500			
		A	B	C	D	A	B	C	D	A	B	C	D	A	B	C	D
<b>ENJEKSİYON ÜNİTESİ</b>																	
Vida Çapı	mm	100	110	120	130	100	110	120	130	110	120	130	140	110	120	130	140
Vide Boy/Çap oranı	L/D	24.2	22	20.2	18.6	24.2	22	20.2	18.6	26.2	24	22.2	20.6	26.2	24	22.2	20.6
Teorik enjeksiyon hacmi	cm <sup>3</sup>	4006	4847	5768	6769	4006	4847	5768	6769	5227	6220	7300	8467	5227	6220	7300	8467
Enjeksiyon Kapasitesi (PS)	g	3645	4411	5249	6160	3645	4411	5249	6160	4757	5660	6643	7705	4757	5660	6643	7705
Enjeksiyon Oranı	g/s	663	802	955	1120	663	802	955	1120	806	959	1126	1306	806	959	1126	1306
Enjeksiyon Basıncı	MPa	211	174	146	125	211	174	146	125	200	168	143	123	200	168	143	123
Plastikleşme Hızı (PS)	g/s	86.5	104	122	139	86.5	104	122	139	104	122	139	151	104	122	139	151
Vida Devir Hızı	rpm	0~105				0~105				0~98				0~98			
<b>MENGENE ÜNİTESİ</b>																	
Kilitleme Gücü	kN	10000				12000				13000				14000			
Mengene Stroğu	mm	1220				1300				1400				1500			
Kolonlar Arası Mesafe	mm	1160 x 1160				1250 x 1250				1350 x 1280				1450 x 1350			
Max.Kalıp Kalınlığı	mm	1160				1250				1300				1400			
Min.Kalıp Kalınlığı	mm	500				550				600				700			
İtici Stroğu	mm	320				320				350				350			
İtici Gücü	kN	215				215				215				318			
İtici Sayısı	pcs	21				21				25				29			
<b>DİĞERLERİ</b>																	
Max.Pompa Basıncı	MPa	16				16				16				16			
Pompa motor Gücü	kW	37+55				37+55				55+55				55+55			
Isıtıcı Gücü	kW	71.55				71.55				85.55				85.55			
Makina Boyutlan	m	11.9 x 2.72 x 2.75				12.2 x 2.9 x 2.8				13.3 x 3.08 x 2.9				13.9 x 3.2 x 4.7			
Makina Ağırlığı	t	51				59				67				82			
Mal Hazne Kapasitesi	kg	200				200				400				400			
Yağ Tankı Kapasitesi	l	1660				1700				1980				1980			

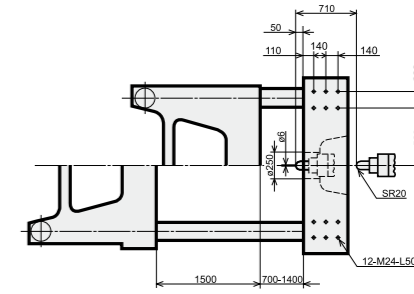
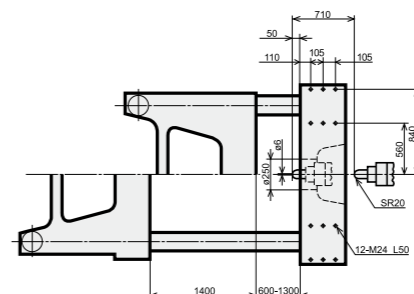
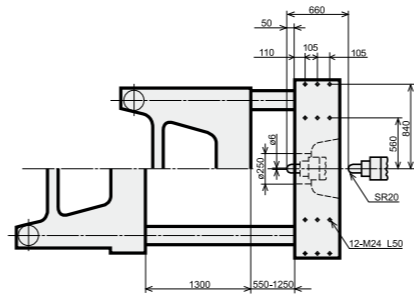
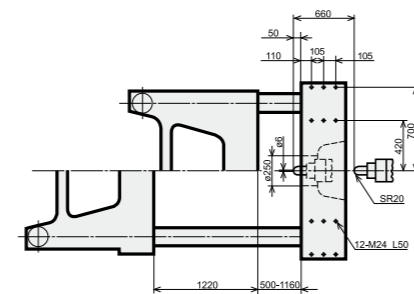
## Plaka Ebatları

Hareketli Plaka



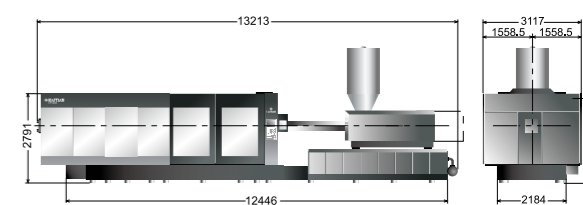
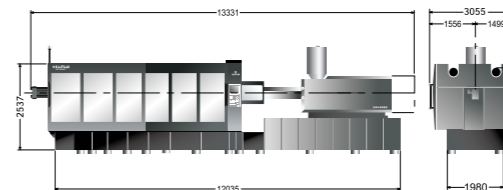
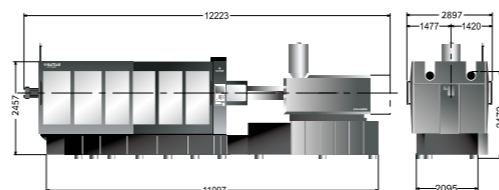
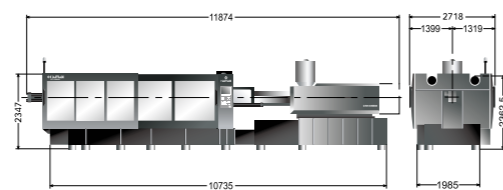
## Plaka Ebatları

Robot bağlantı delikleri sabit plakada



## Makina Boyutları

We reserve the right to make changes as a result of further technical advantages.



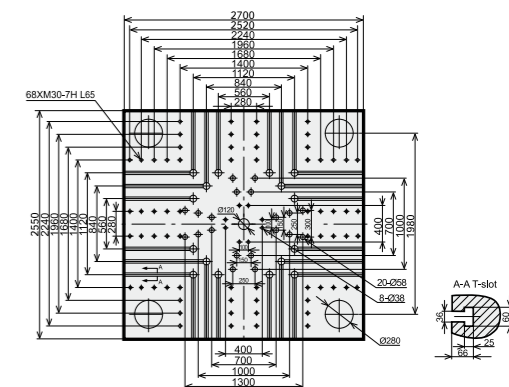
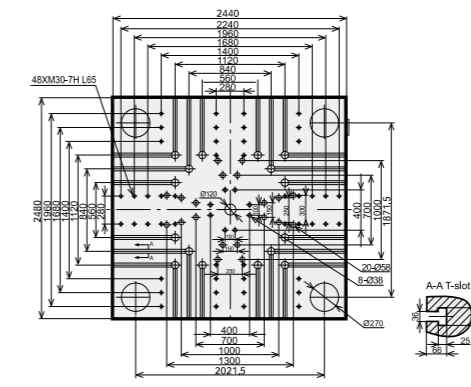
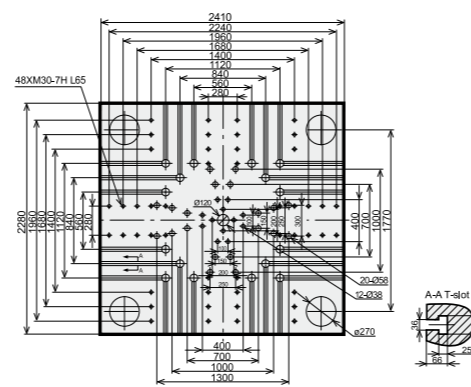
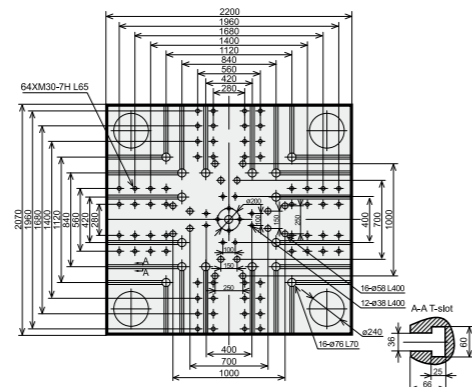
\* Depend on injection size

## Spesifikasyon

		SA 16000/13700			SA 18500/13700			SA 21000/15800			SA 24000	
		A	B	C	A	B	C	A	B	C	15800	35000
<b>ENJEKSİYON ÜNİTESİ</b>												
Vida Çapı	mm	130	140	150	130	140	150	140	150	160	150	185
Vide Boy/Çap oranı	L/D	24	22.3	20.8	24	22.3	20.8	24	22.4	21	22.4	21.6
Teorik enjeksiyon hacmi	cm <sup>3</sup>	8349	9683	11115	8349	9683	11115	9683	11115	12647	11115	26020
Enjeksiyon Kapasitesi (PS)	g	7598	8812	10115	7598	8812	10115	8812	10115	11509	10115	23678
Enjeksiyon Oranı	g/s	1142	1325	1521	1142	1325	1521	1262	1448	1648	1448	1580
Enjeksiyon Basıncı	MPa	164	142	123	164	142	123	163	142	125	142	136
Plastikleşme Hızı (PS)	g/s	139	151	165	139	151	165	151	165	176	165	201
Vida Devir Hızı	rpm		0~100			0~100			0~75		0~75	0~67
<b>MENGENE ÜNİTESİ</b>												
Kilitleme Gücü	kN		16000			18500			21000			24000
Mengene Stroğu	mm		1600			1650			1800			1900
Kolonlar Arası Mesafe	mm		1550 x 1430			1650 x 1500			1750 x 1600			1850 x 1700
Max.Kalıp Kalınlığı	mm		1500			1560			1700			1800
Min.Kalıp Kalınlığı	mm		700			780			780			800
İtici Stroğu	mm		400			400			400			450
İtici Gücü	kN		318			430			430			430
İtici Sayısı	pcs		29			33			29			29
<b>DİĞERLERİ</b>												
Max.Pompa Basıncı	MPa		16			16			16			16
Pompa motor Gücü	kW		45+45+45			45+45+45			45+55+55			45+55+55
Isıtıcı Gücü	kW		95.05			95.05			114.05			114.05
Makina Boyutlan	m		14.2 x 3.4 x 5.1			14.7 x 3.5 x 5.2			15.6 x 3.6 x 5.3			16.3 x 3.8 x 5.4
Makina Ağırlığı	t		105			128			137			155
Mal Hazne Kapasitesi	kg		400			400			400			400
Yağ Tankı Kapasitesi	l		2400			2400			2970			2970

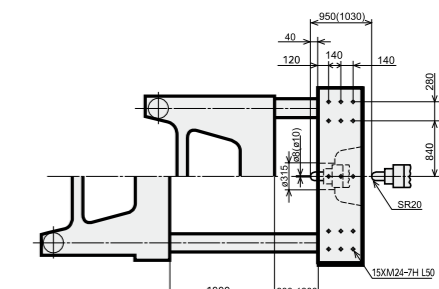
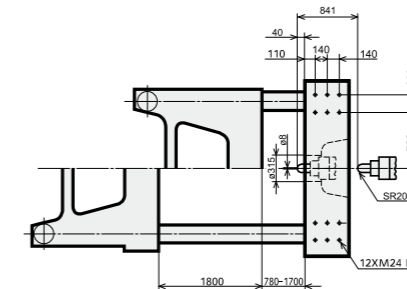
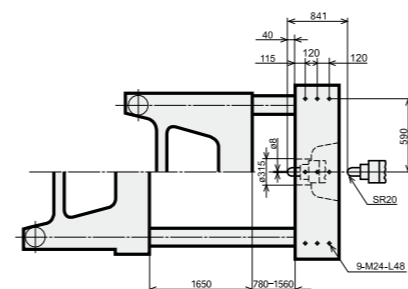
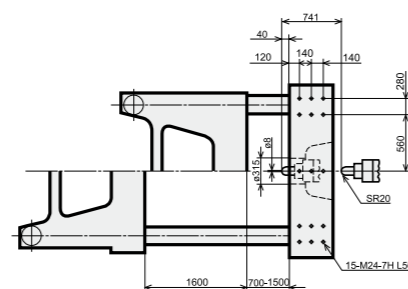
## Plaka Ebatları

Hareketli Plaka



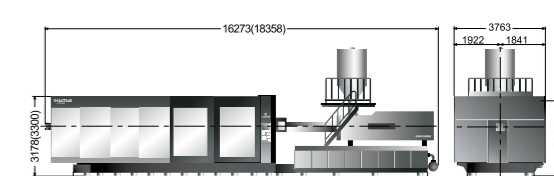
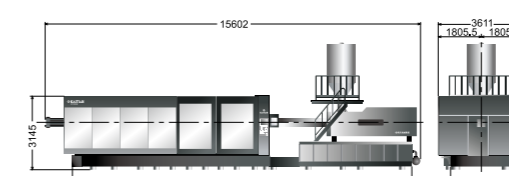
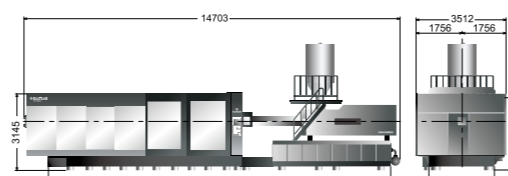
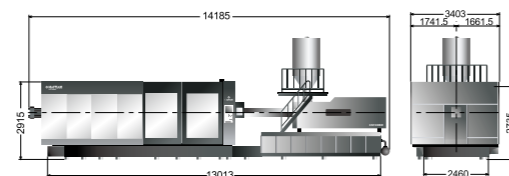
## Plaka Ebatları

Robot bağlantı delikleri sabit plakada



## Makina Boyutları

We reserve the right to make changes as a result of further technical advantages.



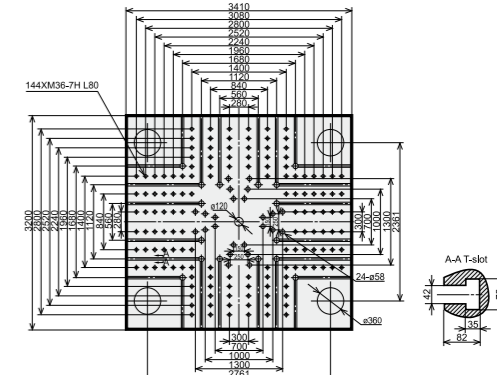
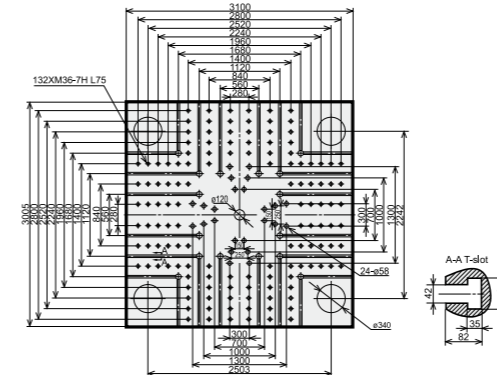
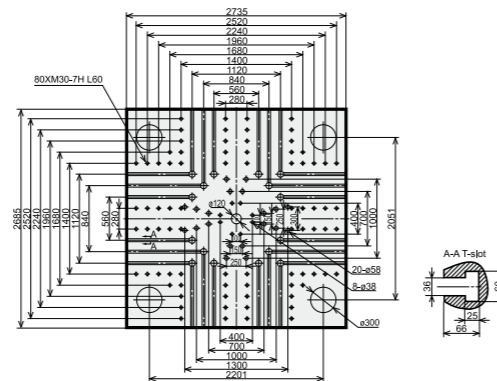
\* Depend on injection size

## Spesifikasyon

		SA 28000			SA 33000		SA 40000	
<b>ENJEKSİYON ÜNİTESİ</b>		31000	48000	58000	58000		89000	
Vida Çapı	mm	170	200	215	215		240	
Vide Boy/Çap oranı	L/D	23.5	20	21	21		22	
Teorik enjeksiyon hacmi	cm <sup>3</sup>	19293	35154	43530	43530		56549	
Enjeksiyon Kapasitesi (PS)	g	17557	31990	39612	39612		51460	
Enjeksiyon Oranı	g/s	1779	2095	2121	2121		2450	
Enjeksiyon Basıncı	MPa	161	137	135	135		158	
Plastikleşme Hızı (PS)	g/s	188	230	247	247		292	
Vida Devir Hızı	rpm	0-60	0-50	0-45	0-45		0-40	
<b>MENGENE ÜNİTESİ</b>								
Kilitleme Gücü	kN		28000		33000		40000	
Mengene Stroğu	mm		2000		2150		2250	
Kolonlar Arası Mesafe	mm		1900 x 1750		2160 x 1900		2400 x 2000	
Max.Kalıp Kalınlığı	mm		1900		1900		2100	
Min.Kalıp Kalınlığı	mm		1000		900		1100	
İtici Stroğu	mm		450		500		550	
İtici Gücü	kN		430		550		550	
İtici Sayısı	pcs		33		25		25	
<b>DİĞERLERİ</b>								
Max.Pompa Basıncı	MPa		16		16		16	
Pompa motor Gücü	kW	55 x 4	55 x 4	55 x 4	55 x 4		55 x 6	
Isıtıcı Gücü	kW	171.4	171.4	187.45	187.6		269.35	
Makina Boyutlan	m	18.9x3.92x5.2	18.9x3.92x5.2	19.3x3.92x5.2	22 x 4.5 x 5.3		24 x 4.7 x 5.5	
Makina Ağırlığı	t	190	195	207	250		345	
Mal Hazne Kapasitesi	kg	400	400	400	400		600	
Yağ Tankı Kapasitesi	l	4425	4425	4425	4700		5800	

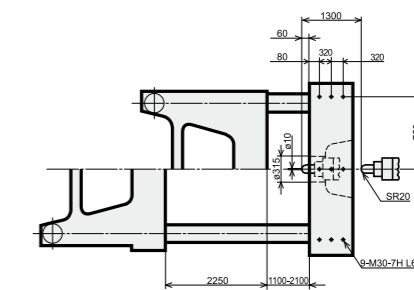
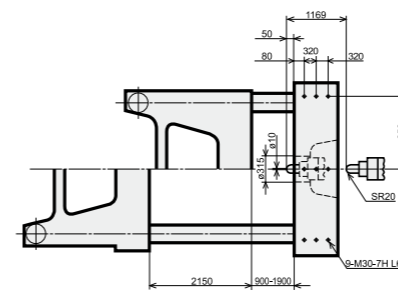
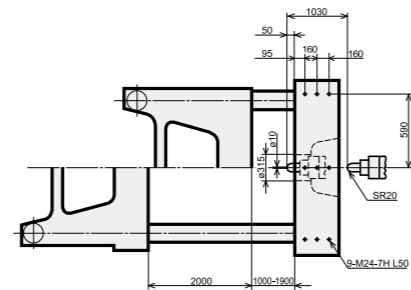
## Plaka Ebatları

Hareketli Plaka



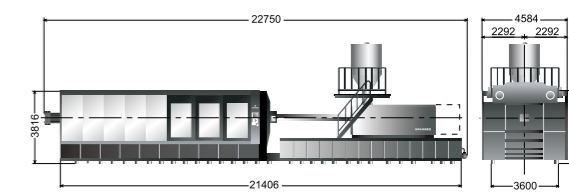
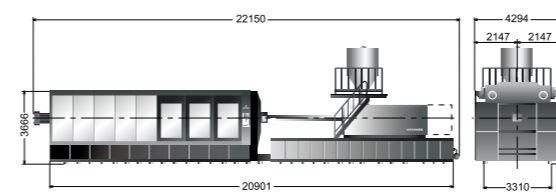
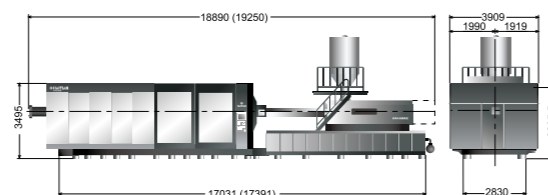
## Plaka Ebatları

Robot bağlantı delikleri sabit plakada



## Makina Boyutları

We reserve the right to make changes as a result of further technical advantages.



\* Depend on injection size