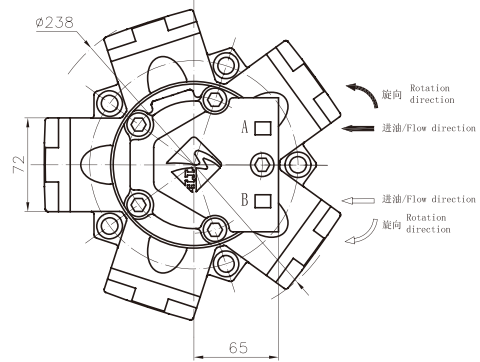
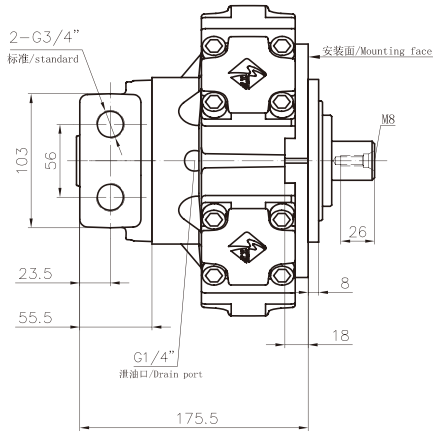
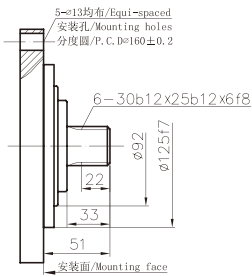


ITM01 外形及安装尺寸/ ITM01 Installation Dimensions

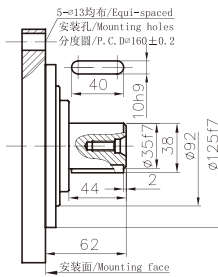


标准外花键 : ITM01-***
Standard Involute Spline



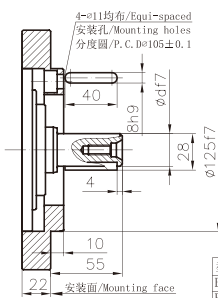
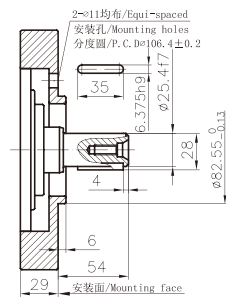
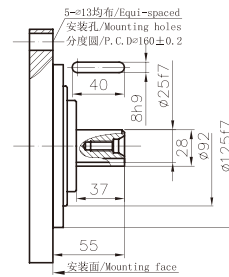
ITM01-***B₃

标准平键 : ITM01-***B
Standard Parallel Key



ITM01-***B₁₁, B₁₁-1

ITM01-***B₂₈

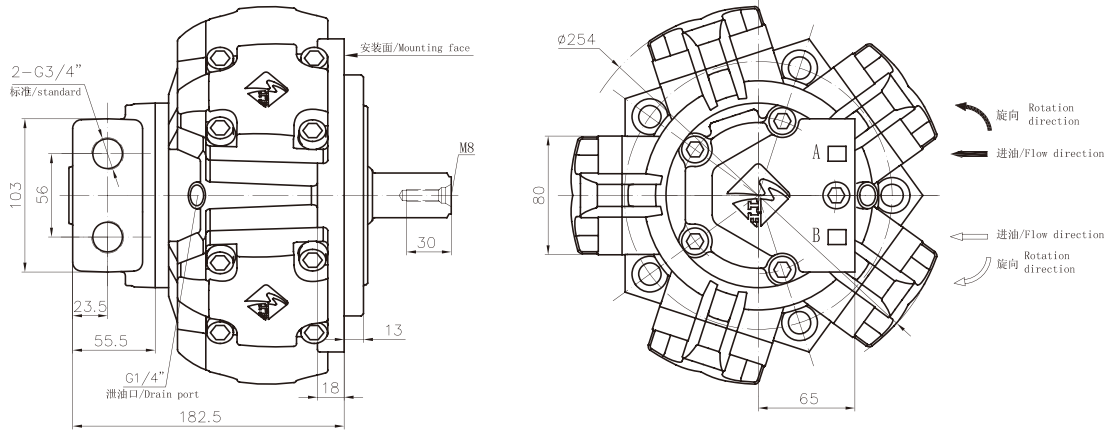


型号	d
B ₁₁	25
B ₁₁ -1	125.4

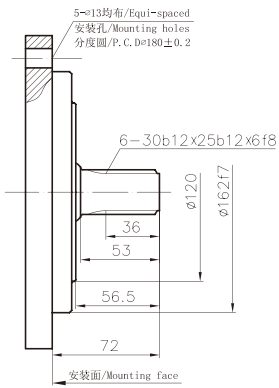
ITM02 系列/ ITM02 Serie



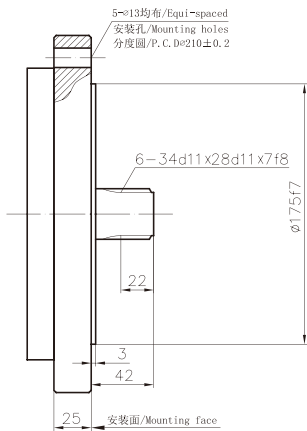
ITM02 外形及安装尺寸/ ITM02 Installation Dimensions



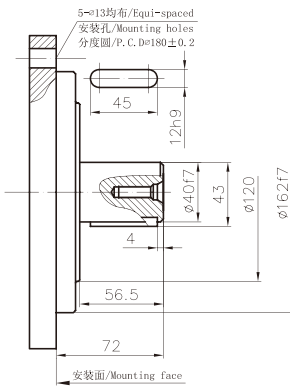
标准外花键 : ITM02-***
Standard Involute Spline : ITM02-***



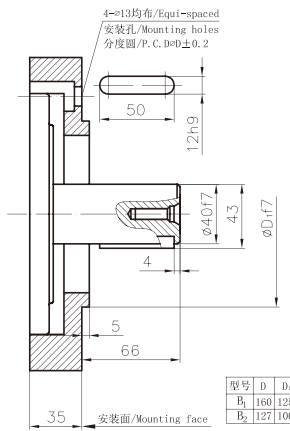
ITM02-***SL₁



标准平键 : ITM02-***B
Standard Parallel Key : ITM02-***B

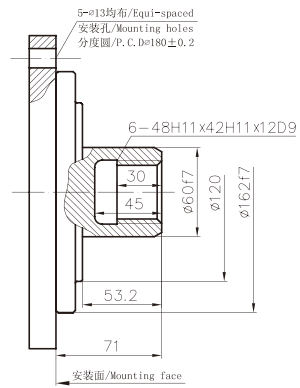


ITM02-***B₁, B₂

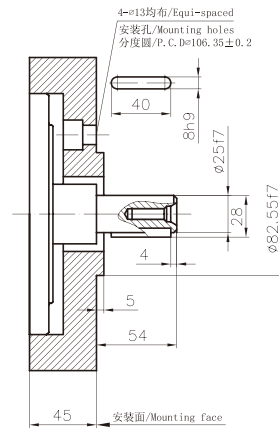


型号	D	D _h
B ₁	160	125
B ₂	127	100

标准内花键 : ITM02-***I
Standard Female Spline : ITM02-***I



ITM02-***B₂₄



www.stfgroup.com.cn

A-06

ITM

ITMS

STFC

STFD

CRM-HA

CRM-HB

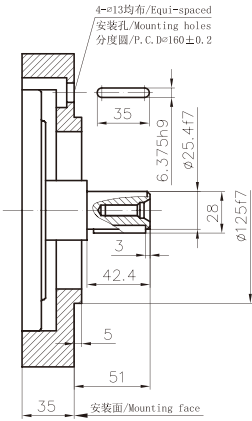
CRM-PS

SMA6V

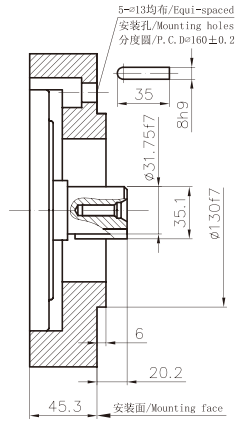
SMA2F

OMZ

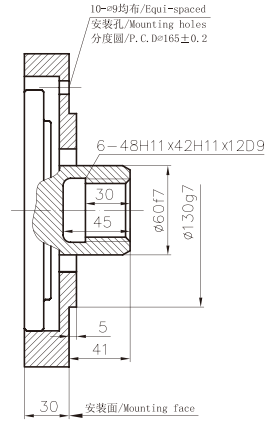
ITM02--*B₃



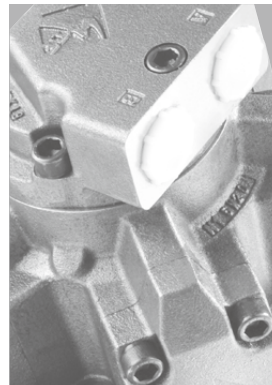
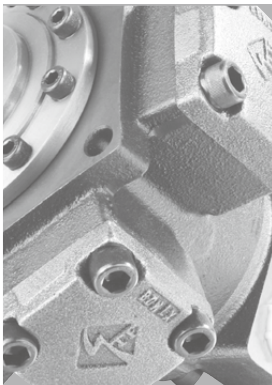
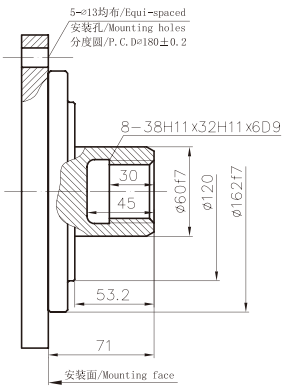
ITM02--*B₁₄



ITM02--*I₀₁、I₀₂



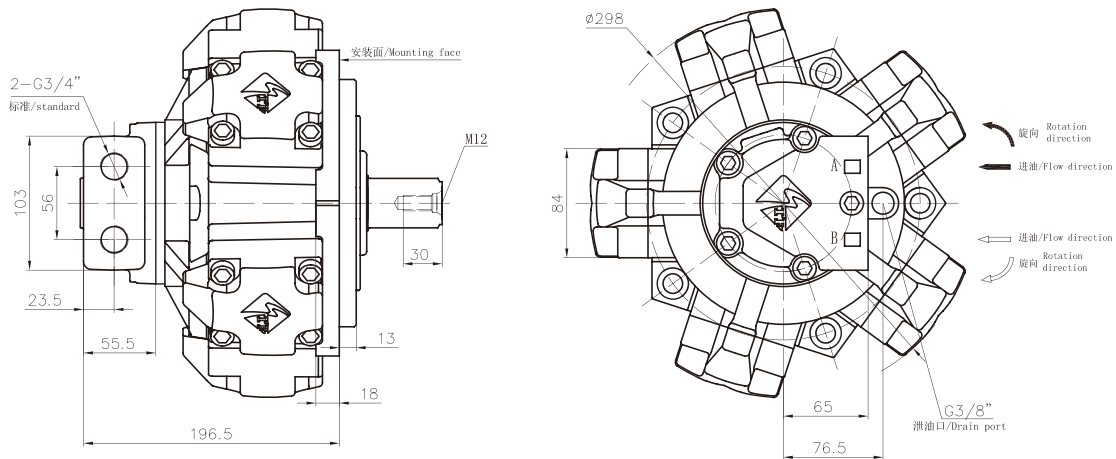
ITM02--*I₀₃



ITM03 系列/ ITM03 Serie

STF
HYDRAULIC TRANSMISSIONS

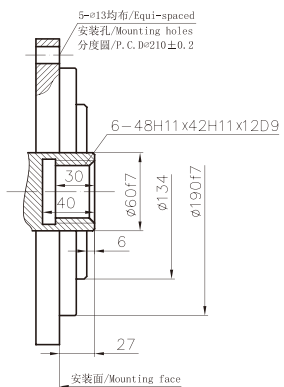
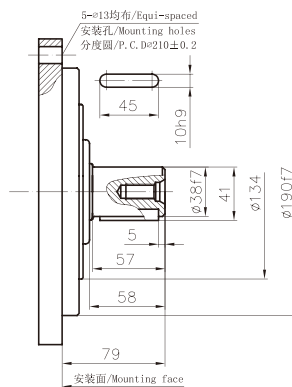
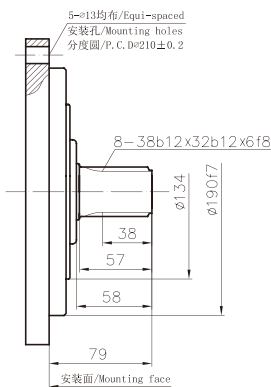
ITM03 外形及安装尺寸/ ITM03 Installation Dimensions



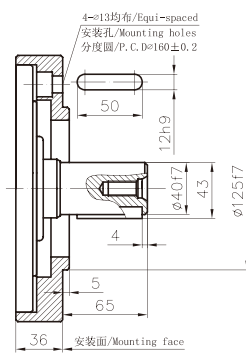
标准外花键 : ITM03---
Standard Involute Spline

标准平键 : ITM03---B
Standard Parallel Key

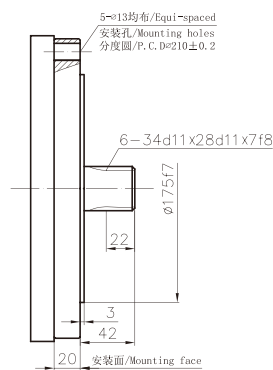
标准内花键 : ITM03---I
Standard Female Spline



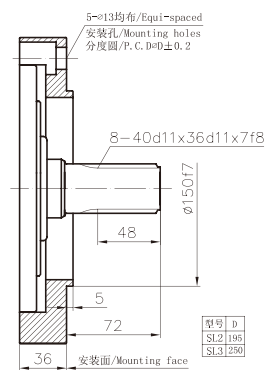
ITM03---B₁



ITM03---SL₁



ITM03---SL₂、SL₃



www.stfgroup.com.cn

A-08

ITM

ITMS

STFC

STFD

CRM-HA

CRM-HB

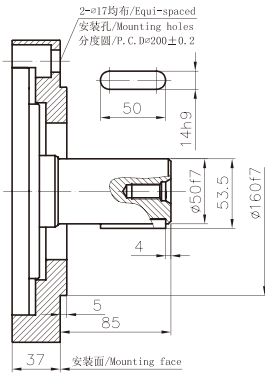
CRM-PS

SMA6V

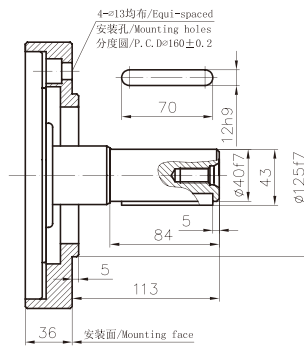
SMA2F

OMZ

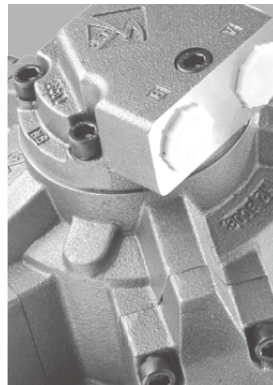
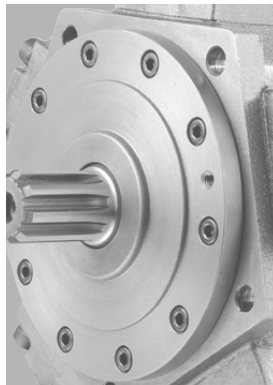
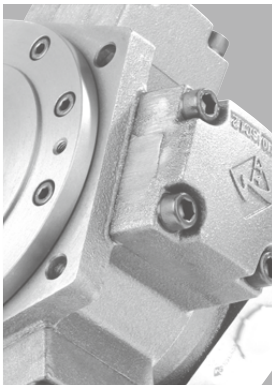
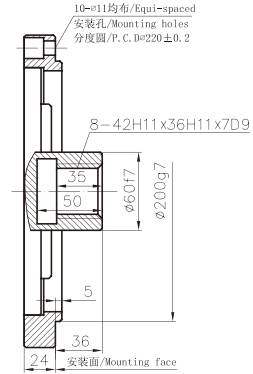
ITM03--*B₂



ITM03--*B₃



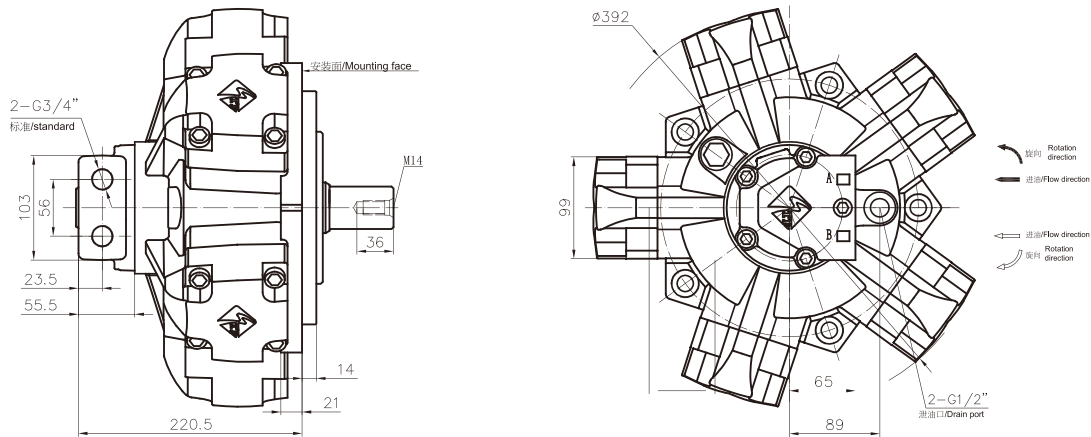
ITM03--*I_{1A1}



ITM06 系列/ ITM06 Serie

STF
HYDRAULIC TRANSMISSIONS

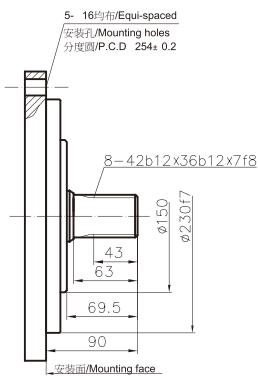
ITM06 外形及安装尺寸/ ITM06 Installation Dimensions



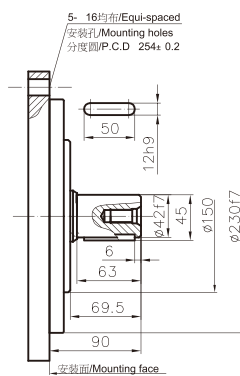
标准外花键 : ITM06---
Standard Involute Spline : ITM06---

标准平键 : ITM06---B
Standard Parallel Key : ITM06---B

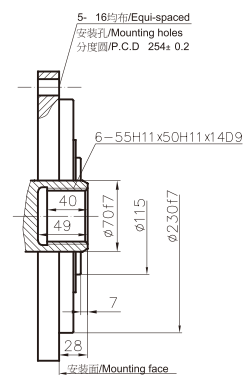
标准内花键 : ITM06---I
Standard Female Spline : ITM06---I



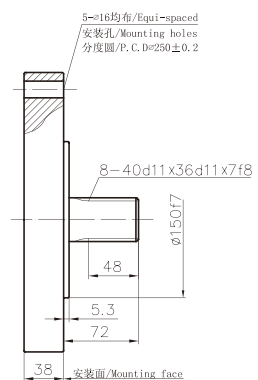
ITM06---SL3



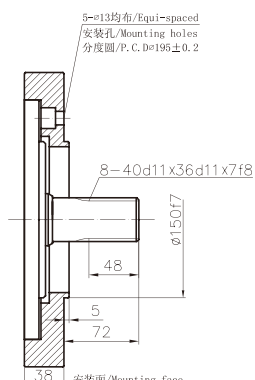
ITM06---SL2



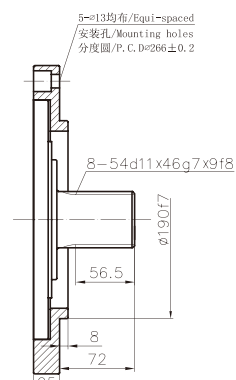
ITM06---N



ITM06---SL1



ITM06---SL2



ITM06---N

www.stfgroup.com.cn A-10

ITM

ITMS

STFC

STFD

CRM-HA

CRM-HB

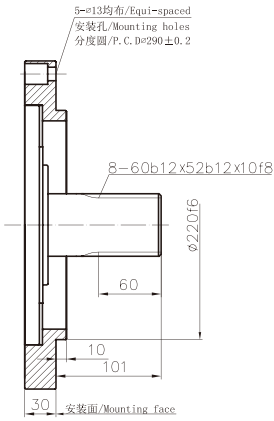
CRM-PS

SMA6V

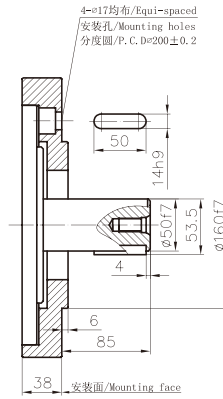
SMA2F

OMZ

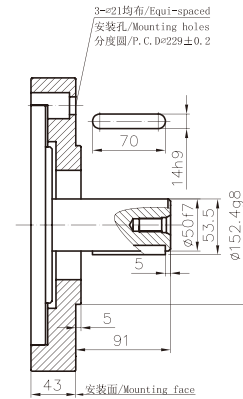
ITM06--*N₁



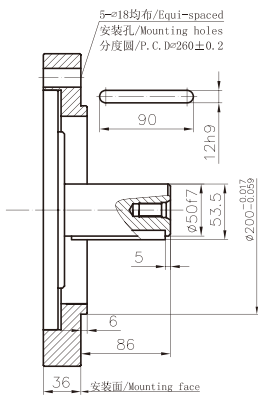
ITM06--*B₂



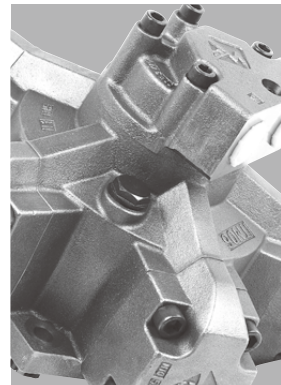
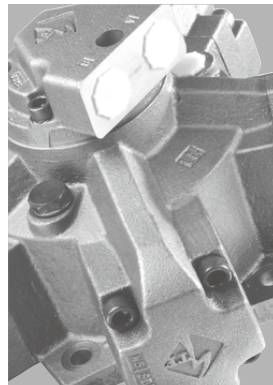
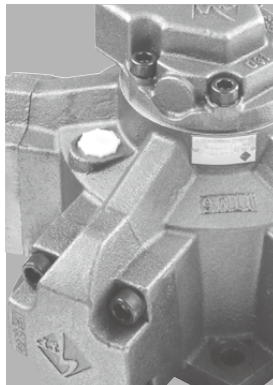
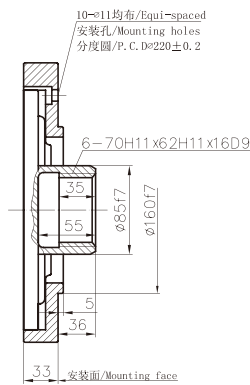
ITM06--*B₄



ITM06--*B₁₃



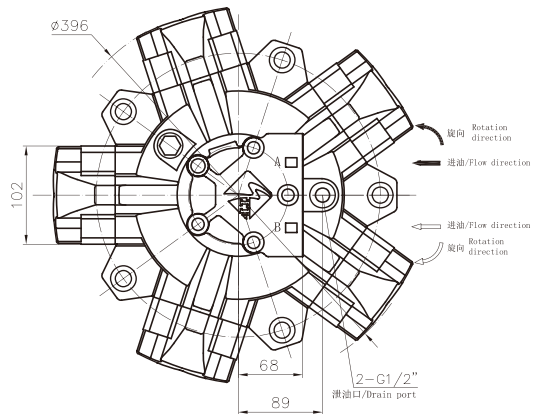
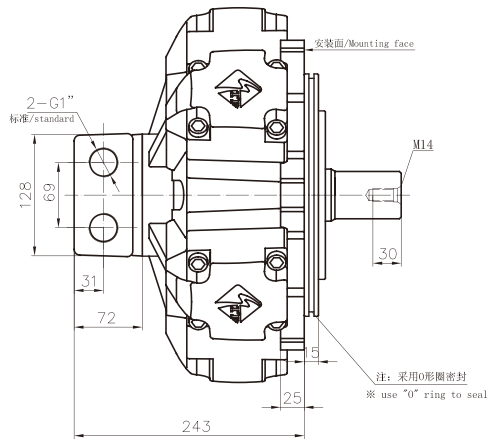
ITM06--*I₁₁



ITM08 系列/ ITM08 Serie



ITM08 外形及安装尺寸/ ITM08 Installation Dimensions

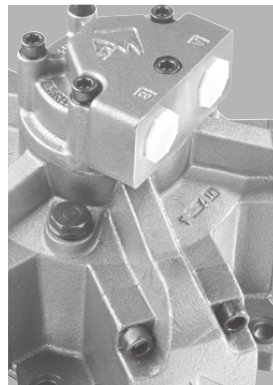
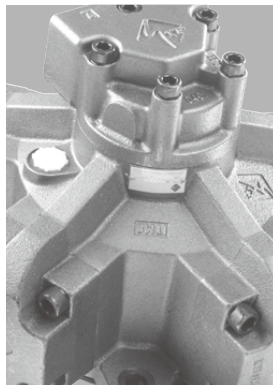
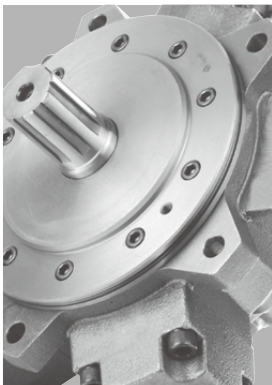
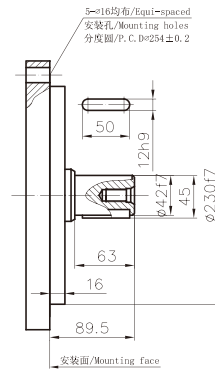
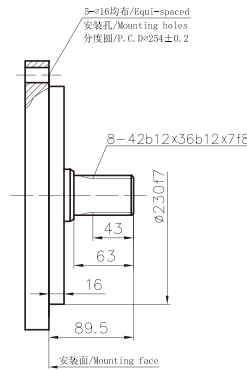
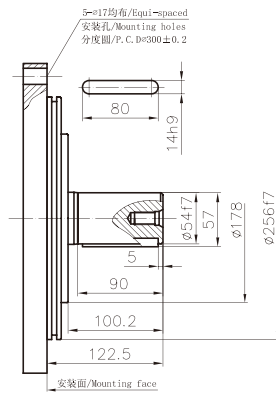
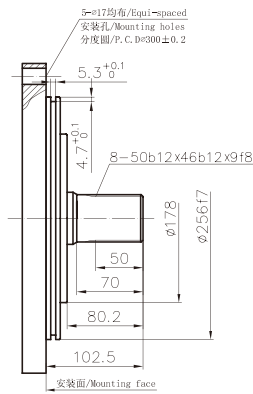


标准外花键
Standard Involute Spline : ITM08---

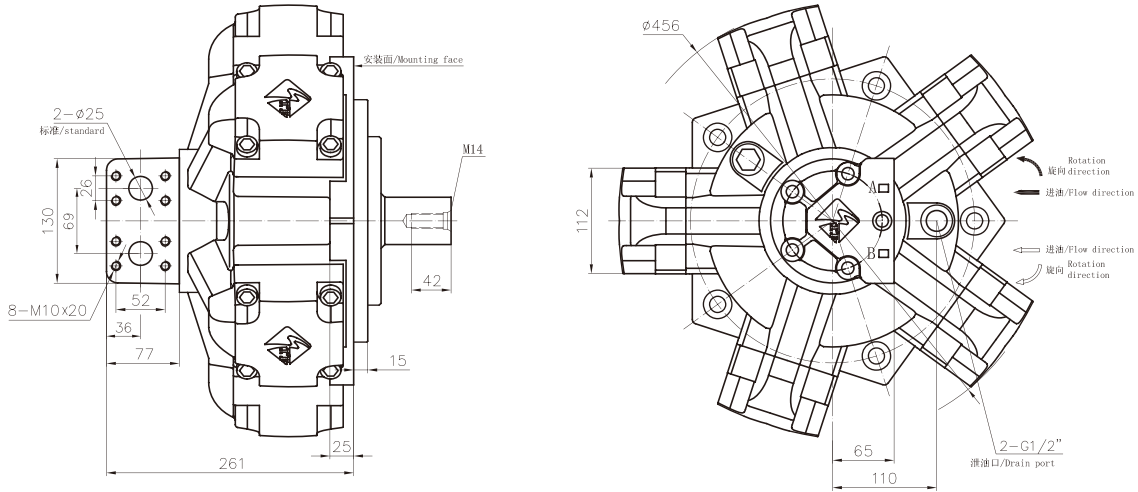
标准平键
Standard Parallel Key : ITM08---B

ITM08---6M

ITM08---6MB



ITM11 外形及安装尺寸/ ITM11 Installation Dimensions

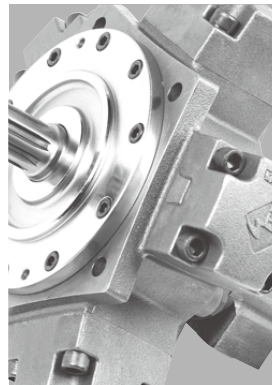
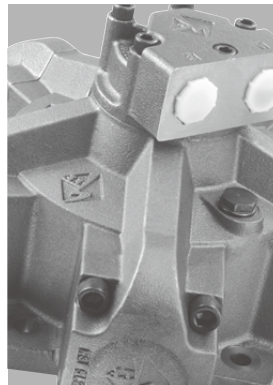
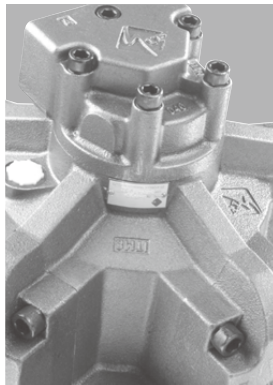
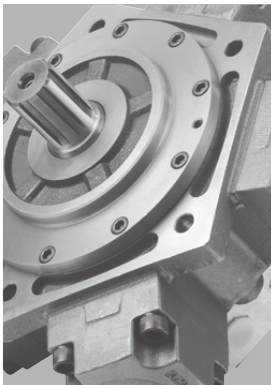
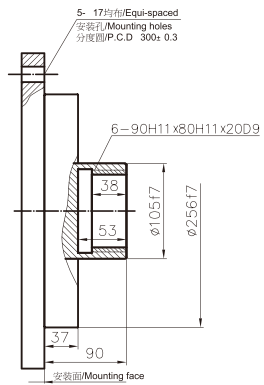
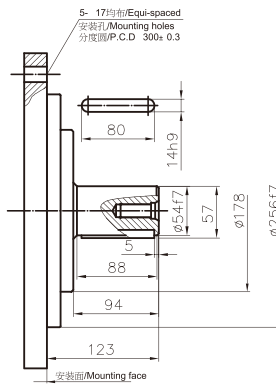
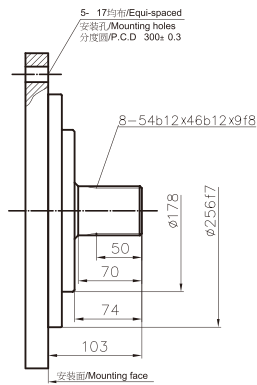
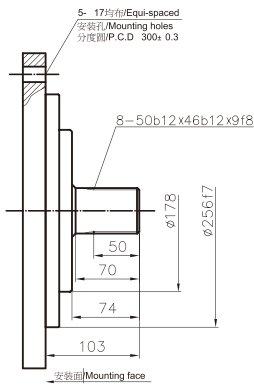


标准外花键 : ITM11--**
Standard Involute Spline : ITM11--**

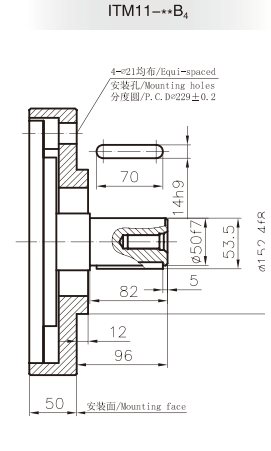
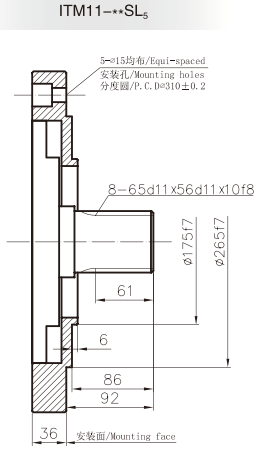
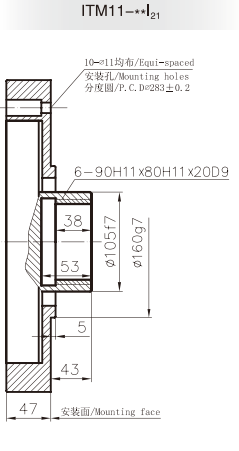
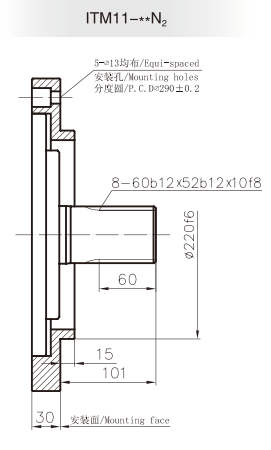
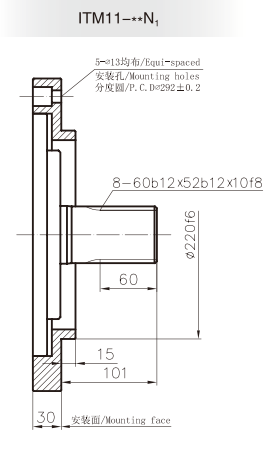
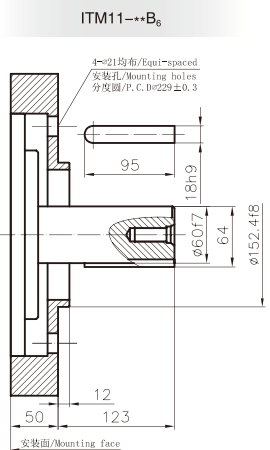
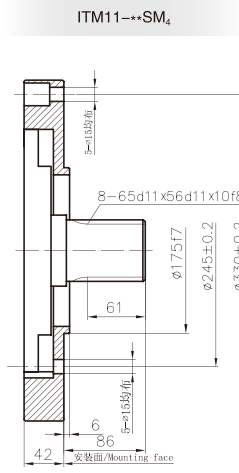
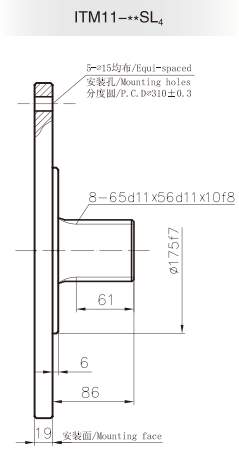
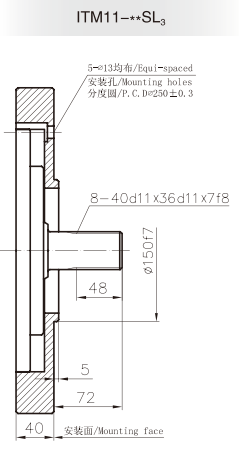
标准外花键 : ITM11--H54
Standard Involute Spline : ITM11--H54

标准平键 : ITM11--**B
Standard Parallel Key : ITM11--**B

标准内花键 : ITM11--**I
Standard Female Spline : ITM11--**I

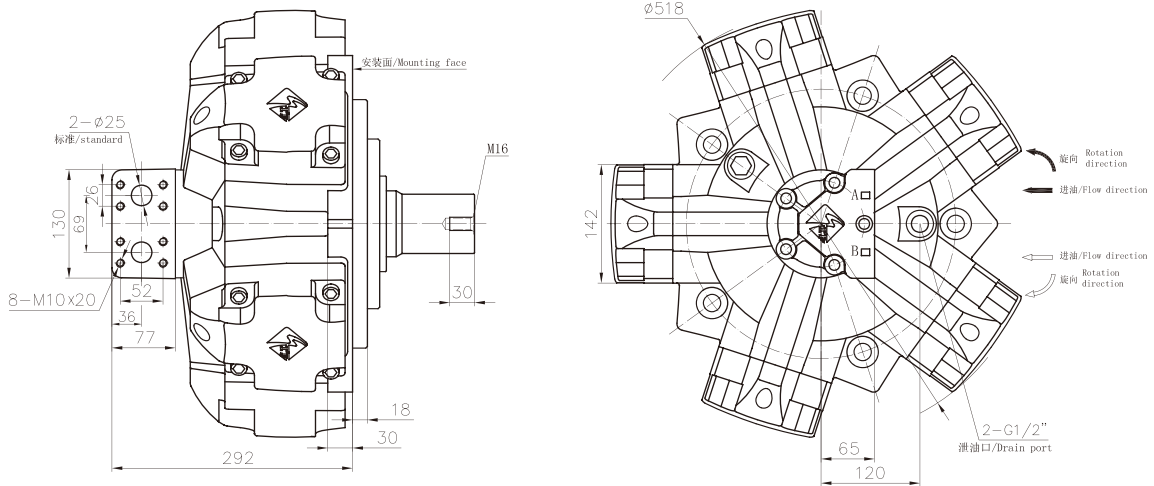


ITM11 系列/ ITM11 Serie



- ITM
- ITMS
- STFC
- STFD
- CRM-HA
- CRM-HB
- CRM-PS
- SMA6V
- SMA2F
- OMZ

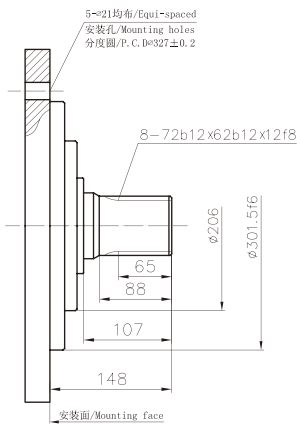
ITM16 外形及安装尺寸/ ITM16 Installation Dimensions



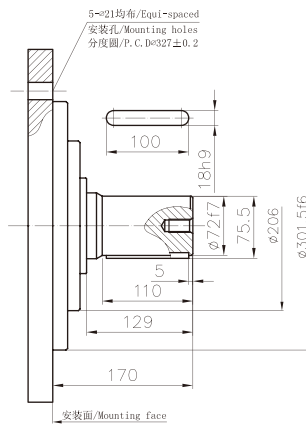
标准外花键 : ITM16--*

标准平键 : ITM16--*B

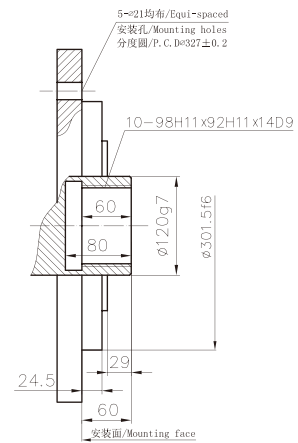
标准内花键 : ITM16--*I



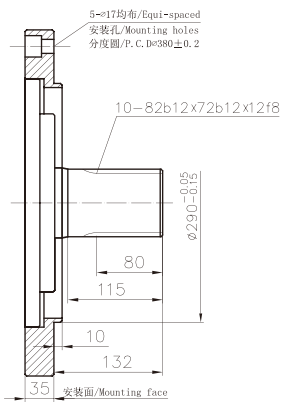
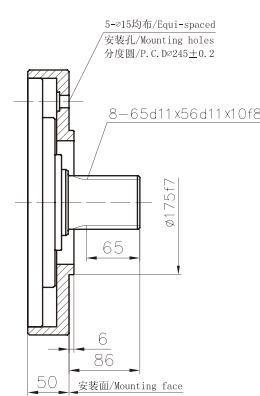
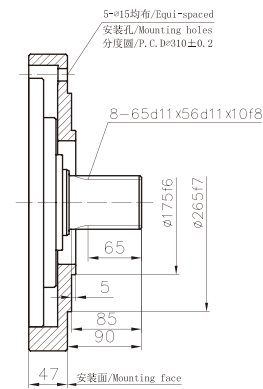
ITM16--*SL₅



ITM16--*SM₄

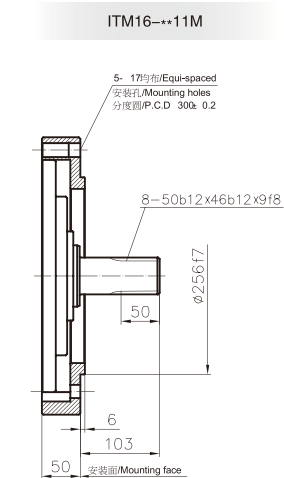
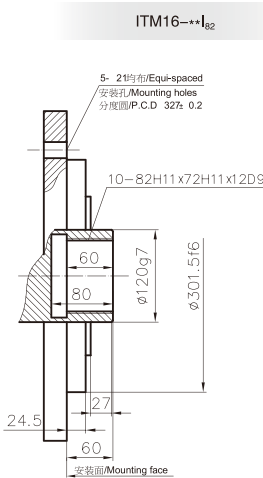
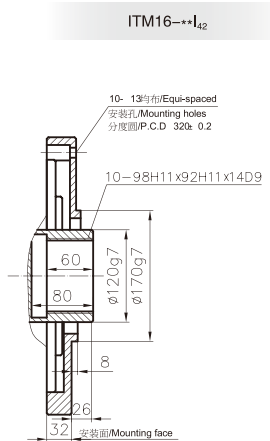
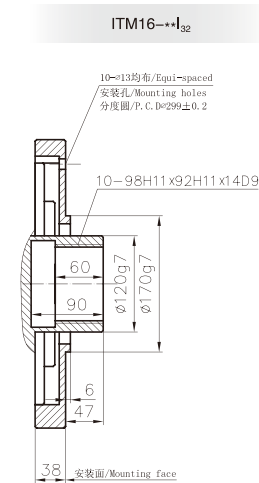
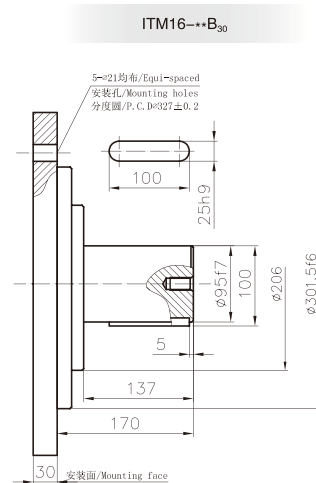
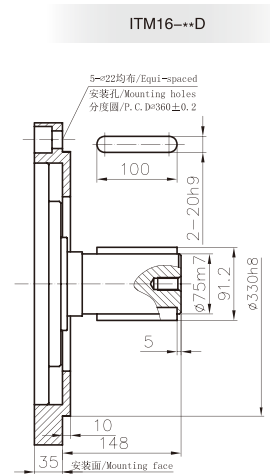
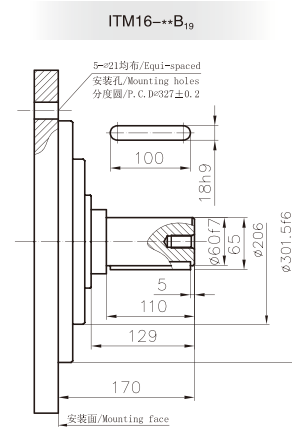
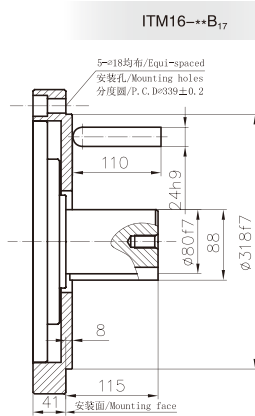
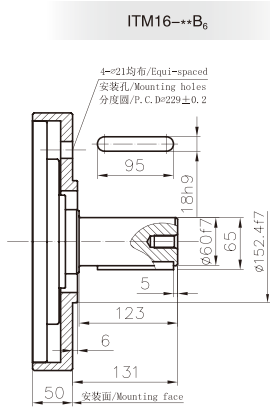


ITM16--*N



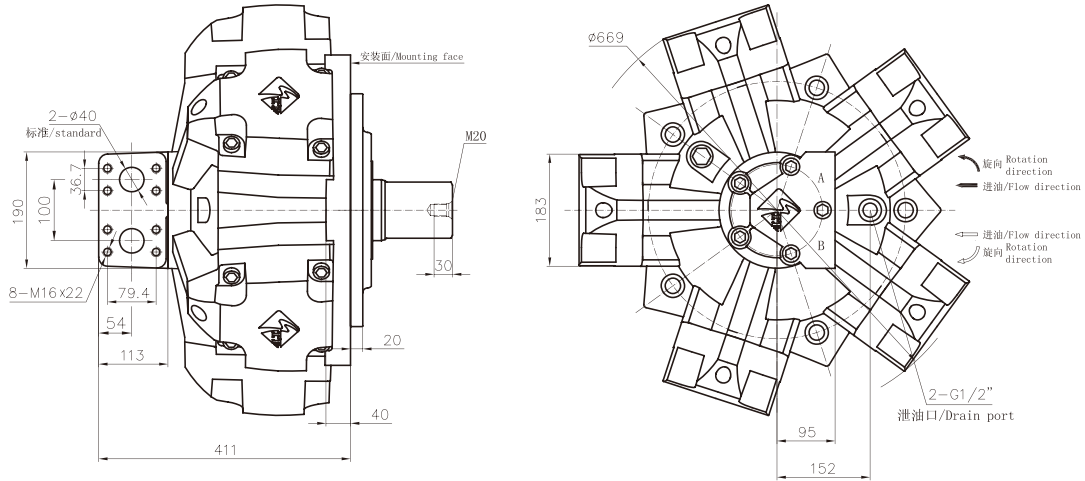
ITM16 系列/ ITM16 Serie

STF
HYDRAULIC TRANSMISSIONS

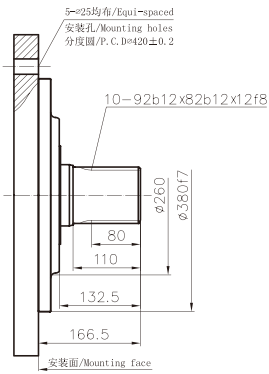


- ITM
- ITMS
- STFC
- STFD
- CRM-HA
- CRM-HB
- CRM-PS
- SMA6V
- SMA2F
- OMZ

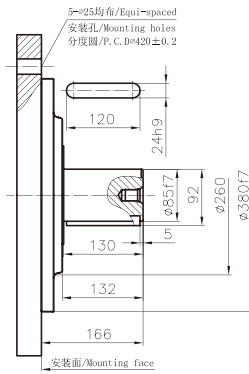
ITM31 外形及安装尺寸/ ITM31 Installation Dimensions



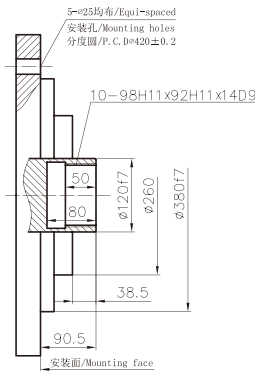
标准外花键 : ITM31---
Standard Involute Spline : ITM31---



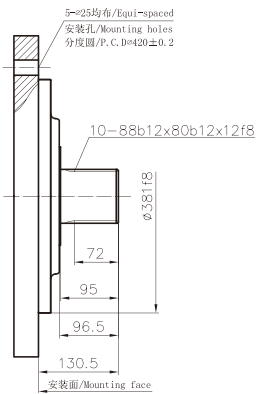
标准平键 : ITM31---B
Standard Parallel Key : ITM31---B



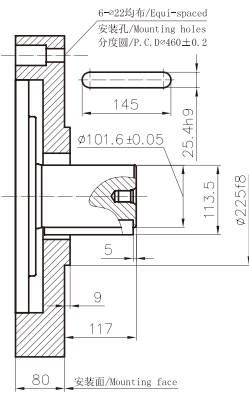
标准内花键 : ITM31---I
Standard Female Spline : ITM31---I



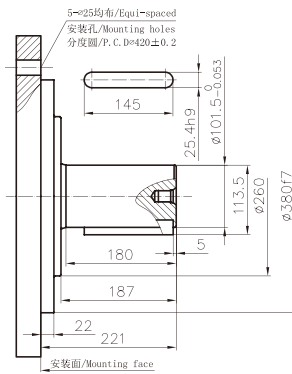
ITM31---SL₇



ITM31---B₈



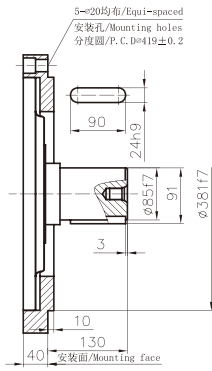
ITM31---B₁₀



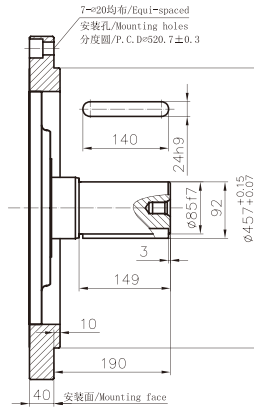
ITM31 系列/ ITM31 Serie

STF
HYDRAULIC TRANSMISSIONS

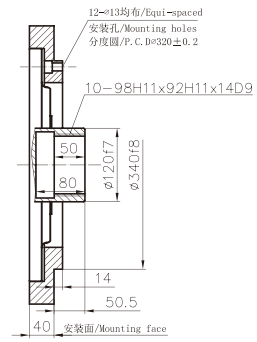
ITM31-***B₂₁



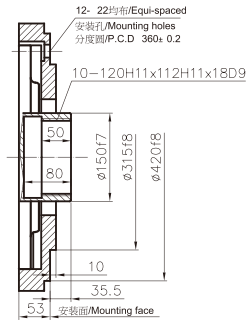
ITM31-***B₂₂



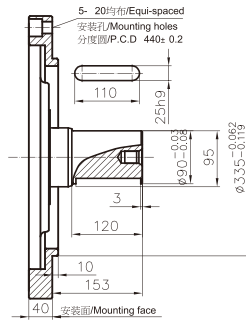
ITM31-***I₅₂



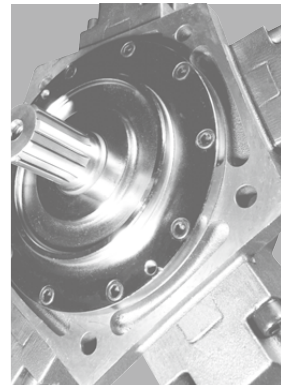
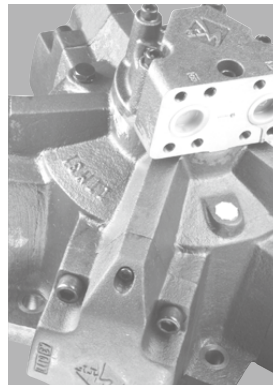
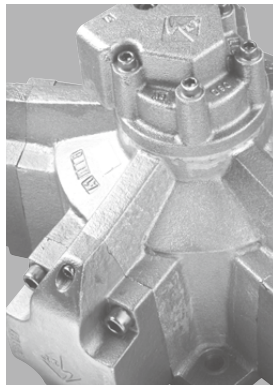
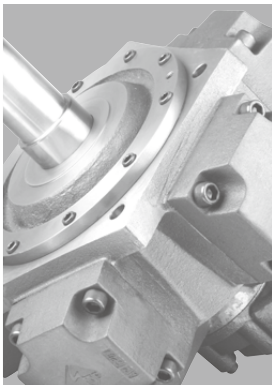
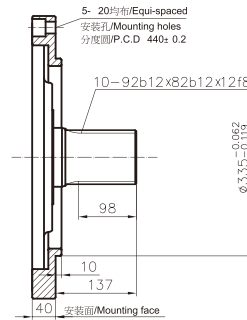
ITM31-***I₅₂



ITM31-***CB



ITM31-***CN



ITM

ITMS

STFC

STFD

CRM-HA

CRM-HB

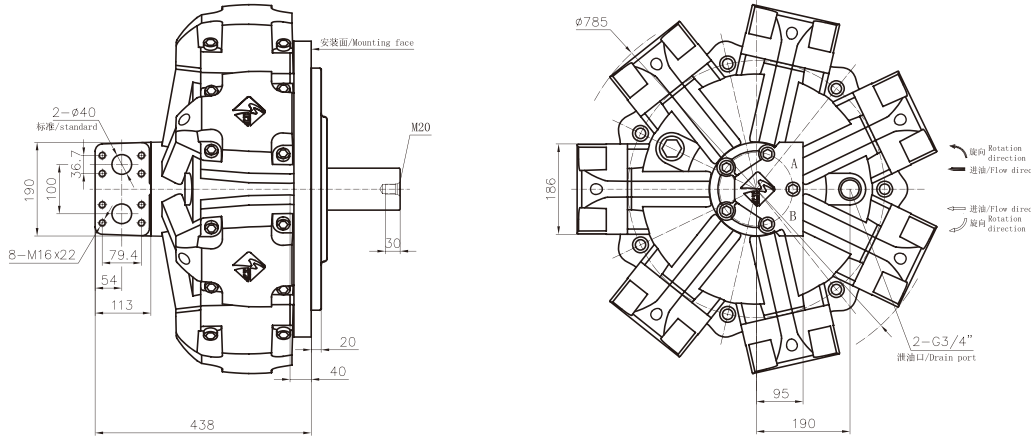
CRM-PS

SMA6V

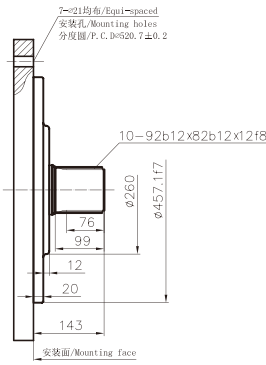
SMA2F

OMZ

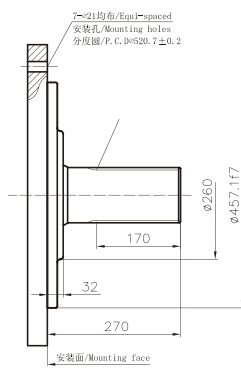
ITM70 外形及安装尺寸/ ITM70 Installation Dimensions



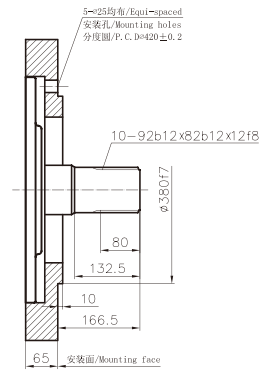
ITM70---a



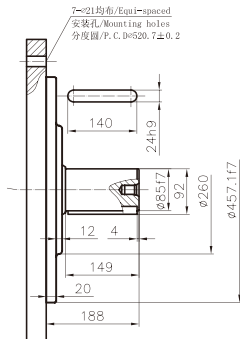
ITM70---a₁



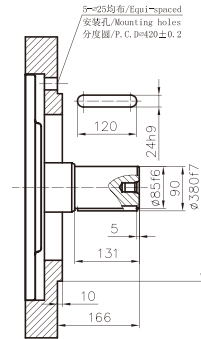
ITM70---a₃



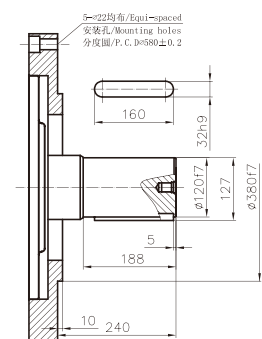
标准平键 : ITM70---B



ITM70---B₁



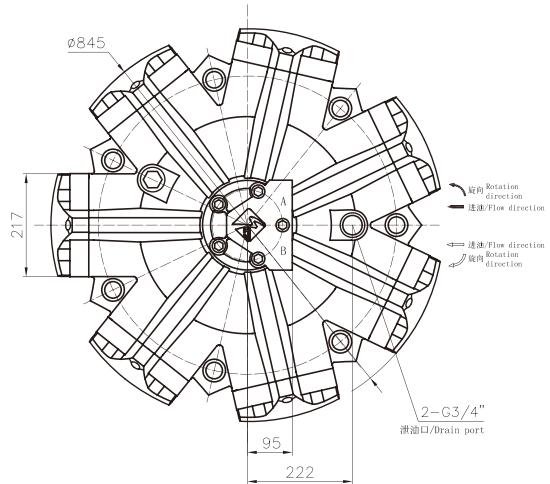
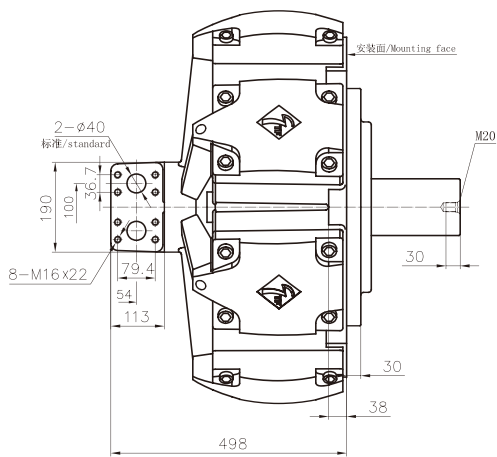
ITM70---B₂



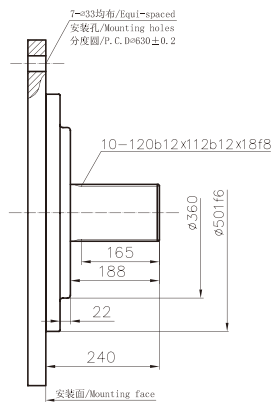
ITM100 系列/ ITM100 Serie



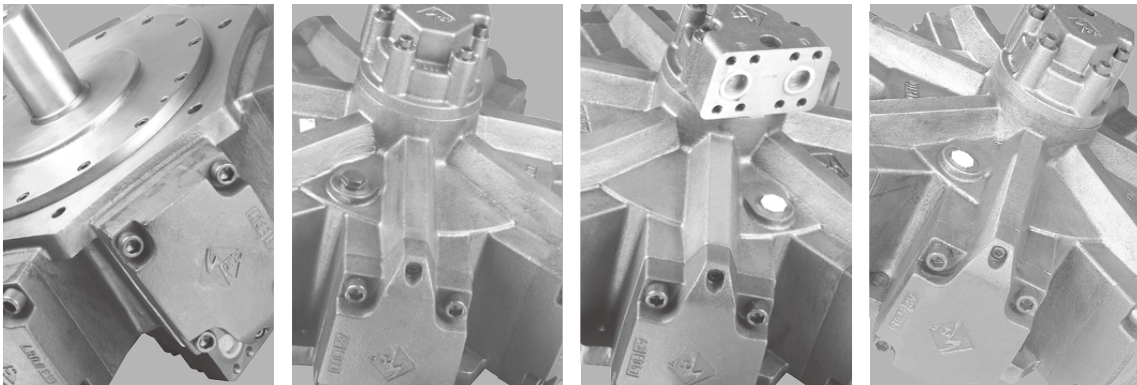
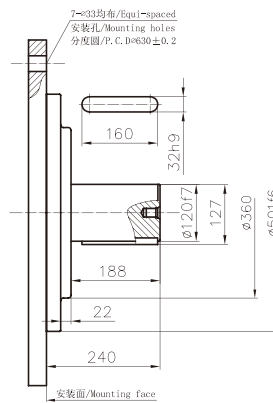
ITM100 外形及安装尺寸/ ITM100 Installation Dimensions



标准外花键 : ITM100-**
Standard Involute Spline : ITM100-**



标准平键 : ITM100-**B
Standard Parallel Key : ITM100-**B



- ITM
- ITMS
- STFC
- STFD
- CRM-HA
- CRM-HB
- CRM-PS
- SMA6V
- SMA2F
- OMZ